

FEDERAL BUREAU OF INVESTIGATION GUIDE TO CONCEALABLE WEAPONS 2003



FORWARD

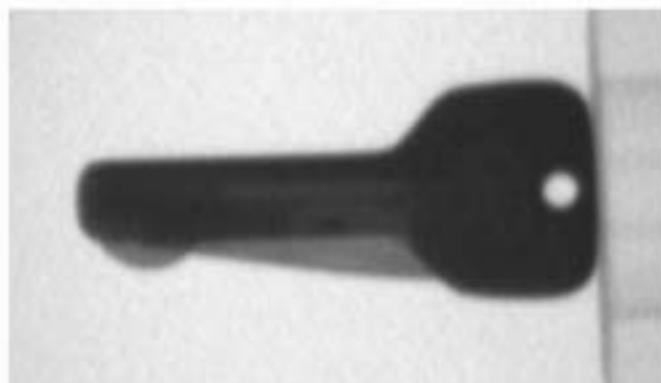
In the wake of the September 11, 2001, airline hijackings the FIREARMS AND TOOLMARKS UNIT of the FBI LABORATORY has started a collection of small and easily concealed knives. This is the first installment of a continuing effort to collect and distribute information on knives that otherwise may be dismissed as non threatening items. Many of the knives in this collection were commercially purchased and typically can be bought for less than \$20. Some of these knives are common items found in most homes and offices. You will notice also that some are made of a plastic material, making them less likely to be considered a weapon. Each of these tools was designed to cut and is fully functional in that respect. Whether used to cut paper, cardboard, or other material, these knives should be treated as potentially dangerous weapons. Each knife is shown with an accompanying scale for size reference and many include an X-ray photograph to show how these weapons might appear if placed in luggage and passed through a scanning device.

KEY KNIFE

ASP
MADE IN JAPAN

COMPOSITION:
METAL

NOTE: LOOKS LIKE
AN OVERSIZED
KEY. STORED
INSIDE IS A BLADE
AND A HANDCUFF
KEY.



KEY

MANUFACTURER:
UNITED CUTLERY
MADE IN ITALY

COMPOSITION:
METAL

NOTE:
APPEARS TO BE
A KEY WHEN
PLACED ON A
RING WITH
OTHER. BLADE
FOLDS OUT
FROM END OF
KEY.

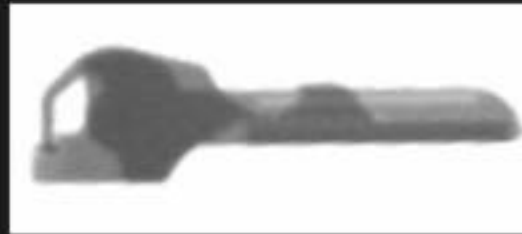


KEY

MANUFACTURER:
SWISS-TECH
MADE IN USA

COMPOSITION:
METAL

NOTE:
APPEARS TO BE A
KEY WHEN
PLACED ON A
RING WITH
OTHERS. OPENS
IN A "SCISSORS-
LIKE" FASHION TO
EXPOSE KNIFE
BLADE,
SERRATED
BLADE, AND FLAT/
PHILLIPS HEAD
SCREWDRIVERS.

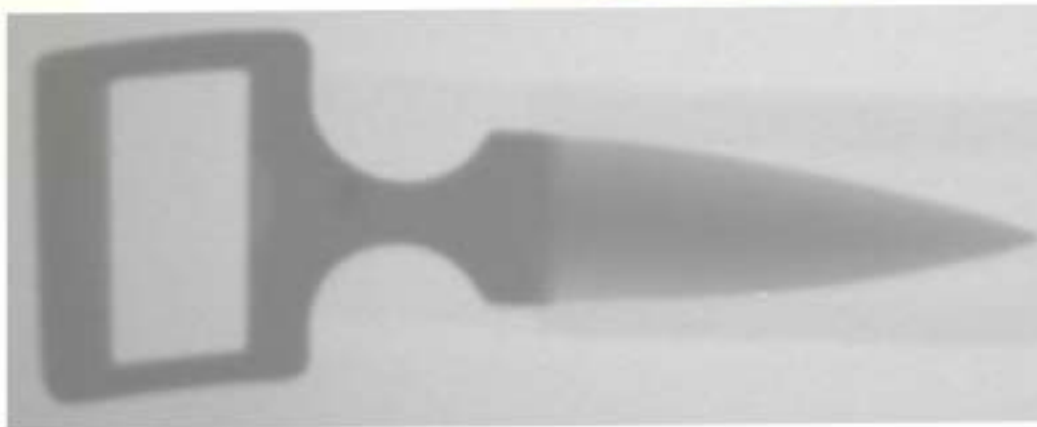


BOWEN BELT
KNIFE

MANUFACTURER:
BOWEN KNIVES
MADE IN USA

COMPOSITION:
METAL BLADE
WITH LEATHER
BELT

NOTE: BLADE IS
HIDDEN INSIDE
OF BELT, ONLY
THE BUCKLE
“HANDLE” IS
SEEN.

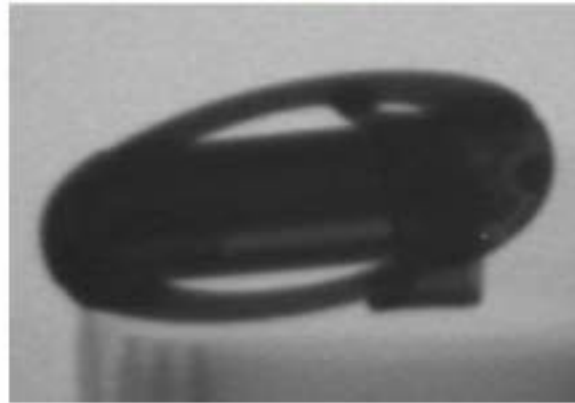


BELT KNIFE

MANUFACTURER:
C.A.S. IBERIA,
INC.
MADE IN USA

COMPOSITION:
LEATHER AND
METAL

NOTE: LOOKS
LIKE AN
ORDINARY BELT.
BUCKLE, BUCKLE
STORES A KNIFE
WHICH CAN BE
PULLED OUT,
EXPOSING
BLADE.

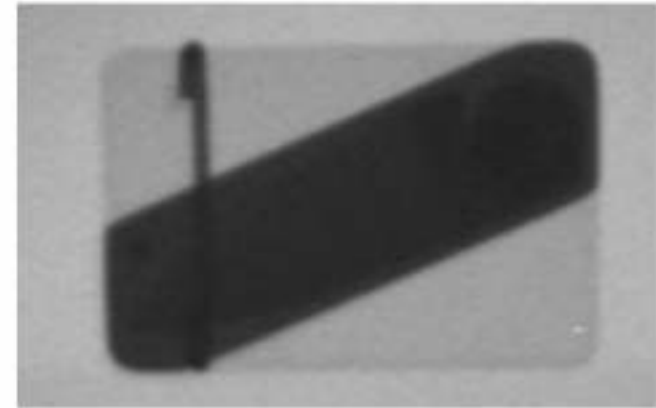
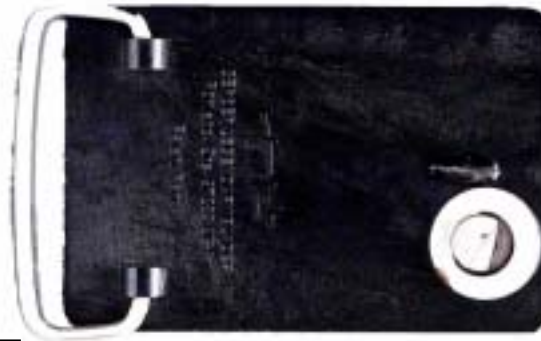


TOUCHE' BELT BUCKLE

MANUFACTURER:
GERBER
MADE IN USA

COMPOSITION:
METAL

NOTE: THE KNIFE
BLADE FOLDS
UNDER THE HANDLE
WHICH CAN BE
STORED IN THE
FRONT OF THE BELT
BUCKLE.

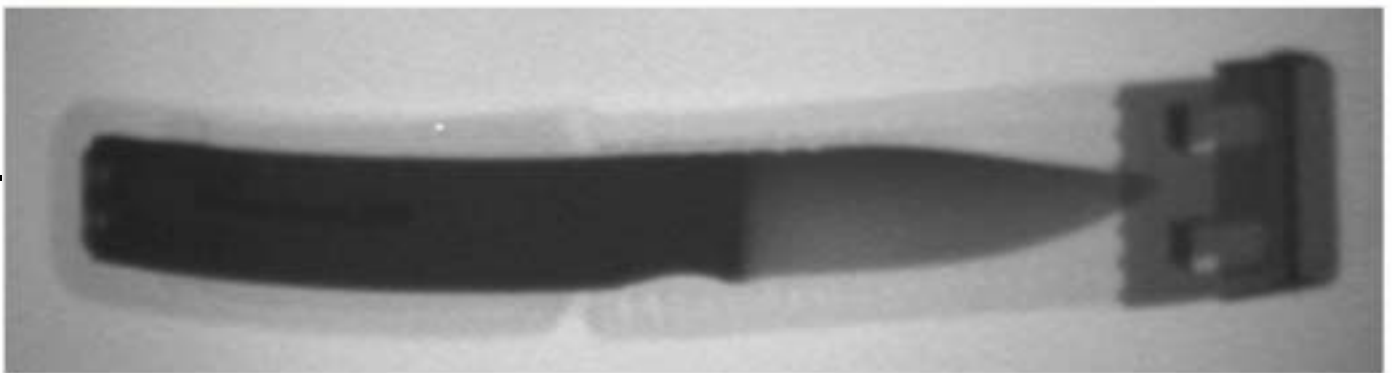


BELT KNIFE

MANUFACTURER:
VALOIS KNIVES
MADE IN USA

COMPOSITION:
METAL

NOTE:
APPEARS AS A
NORMAL BELT.
THE "BUCKLE"
PULLS FROM
THE BELT TO
EXPOSE
THE BLADE.
COMES IN
VARIOUS STYLES.



NECKLACE KNIFE

MANUFACTURER:
KAICUT KNIVES,
MODEL MOKI
MADE IN
GERMANY



COMPOSITION:
STAINLESS STEEL
WITH A
DECORATIVE
INLAY

NOTE: MAY BE
WORN AS A
NECKLACE OR
CARRIED AS A
KEY CHAIN.



KEY RING KNIFE

MANUFACTURER:
MAREX
MADE IN KOREA

COMPOSITION:
PLASTIC AND
METAL

NOTE: LOOKS LIKE
A KEY RING, BUT
HOUSES A BLADE,
SCISSORS AND
FLASHLIGHT.

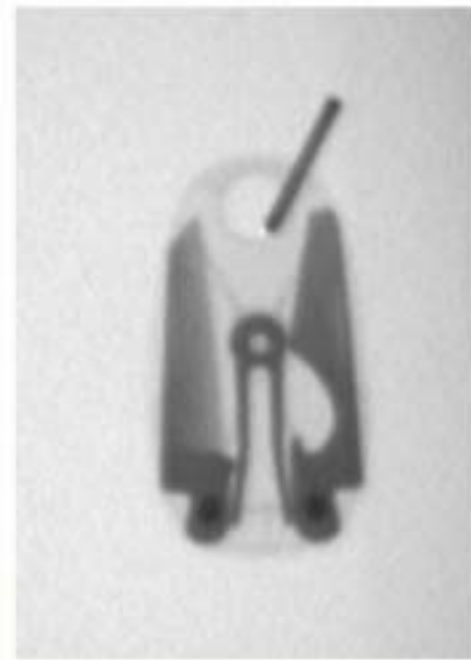


KEY RING KNIFE

EKA
MADE IN SWEDEN

COMPOSITION:
PLASTIC AND
METAL

NOTE: LOOKS
LIKE A KEY RING,
BUT HOUSES A
BLADE AND
BOTTLE OPENER.



PUSH DAGGER

MANUFACTURER:
UNITED CUTLERY
MADE IN TAIWAN

COMPOSITION:
PLASTIC SHEATH
AND HANDLE WITH
METAL BLADE

NOTE:
SHEATH HAS A
CLIP ALLOWING IT
TO BE WORN ON
BELT, BOOT, OR
POCKET. ALSO
COMES WITH
LANYARD TO
WEAR AROUND
NECK OR
POSSIBLY USE AS
A KEY CHAIN.

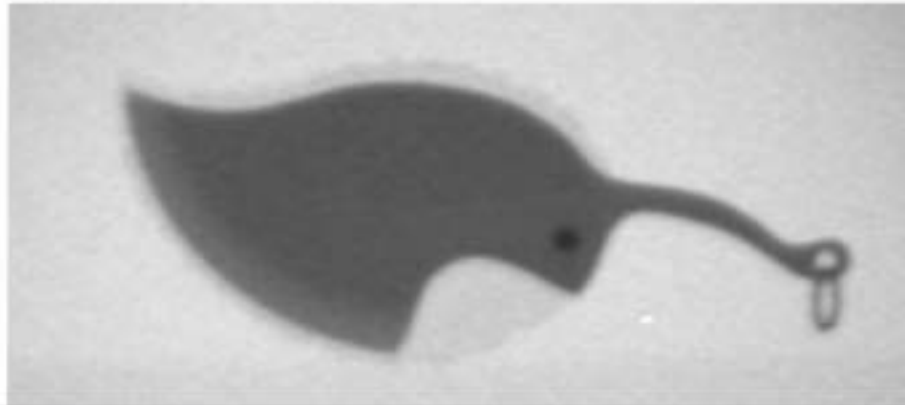


LEAF KNIFE

MANUFACTURER:
UNKNOWN
MADE IN USA

COMPOSITION:
PLASTIC AND
METAL

NOTE: "LEAF"
OPENS TO EXPOSE
KNIFE BLADE.
COMES IN AN ALL -
STAINLESS MODEL
"LEAF". CAN ALSO
BE WORN ON NECK
CHAIN OR AS A KEY
RING.



KUBATON

MANUFACTURER:
UNITED CUTLERY
MADE IN TAIWAN

COMPOSITION:
METAL

NOTE:
STYLES VARY BY
MANUFACTURER.



KEY RING KNIFE

MANUFACTURER:
ZELCO
MADE IN USA



COMPOSITION:
METAL BLADE
WITH TWO-PIECE
PLASTIC HANDLE

NOTE: CAN BE
USED AS A KEY
RING OR WORN
ON A NECK CHAIN.



CRUCIFIX KNIFE

MANUFACTURER:
UNKNOWN

COMPOSITION:
NON MAGNETIC
CROSS WITH
METAL BLADE
AND KEY CHAIN.

NOTE: CAN BE
USED AS A KEY
CHAIN OR
NECKLACE.

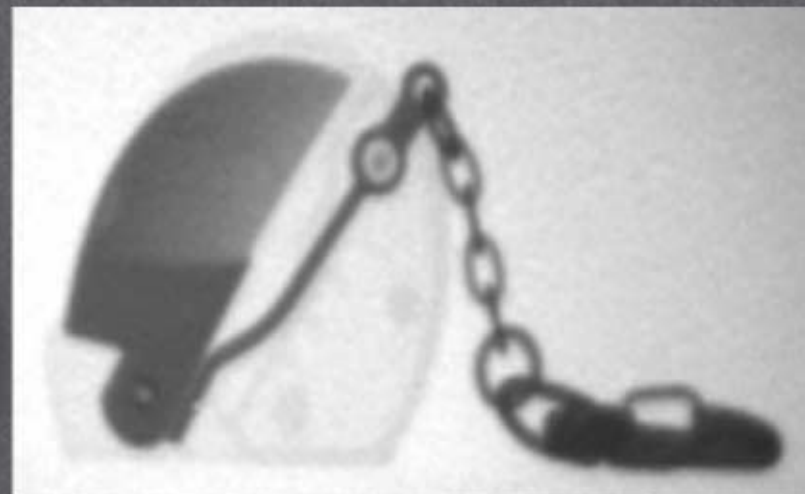


NASCAR HELMET KNIFE

MANUFACTURER:
ACTION RACING
COLLECTIBLES
MADE IN CHINA

COMPOSITION:
PLASTIC CASE
WITH METAL
KNIFE BLADE.

NOTE:
COLORS AND
STYLES VARY
DEPENDING ON
THE NASCAR
THEME.

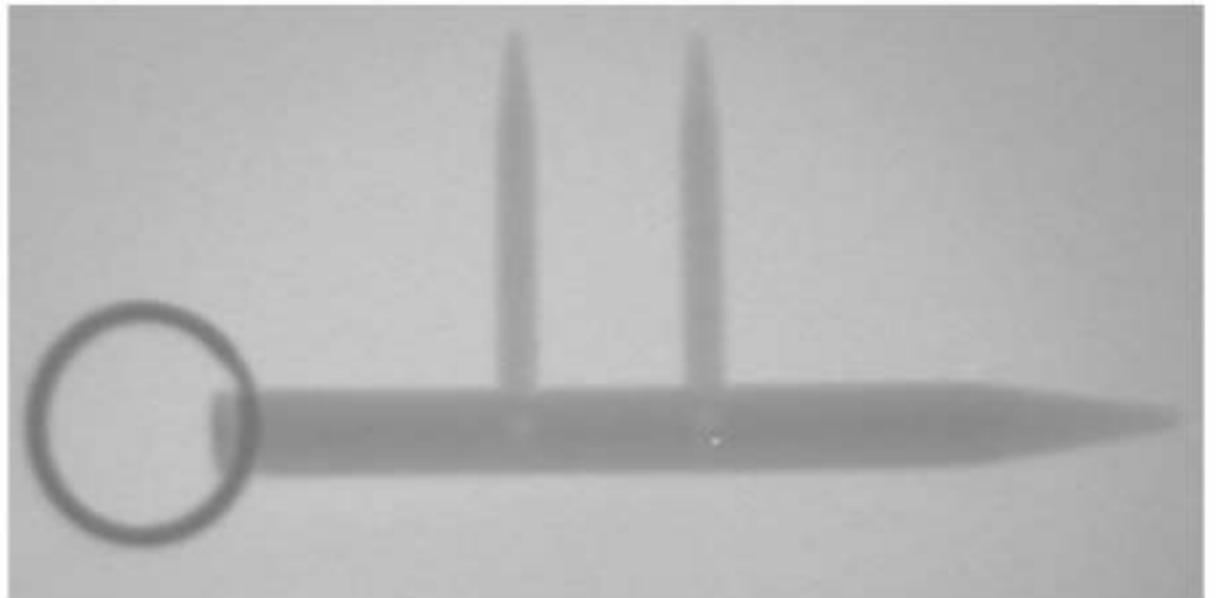


NINJA KEY RING

MANUFACTURER:
UNKNOWN
MADE IN USA

COMPOSITION:
METAL

NOTE: IMPACT
TOOL.



PEPPER SPRAY
KEY RING

MANUFACTURER:
UNKNOWN
MADE IN BRAZIL

COMPOSITION:
TUBULAR METAL
BODY WITH
METAL RING

NOTE: EJECTS
RED PEPPER
SPRAY.

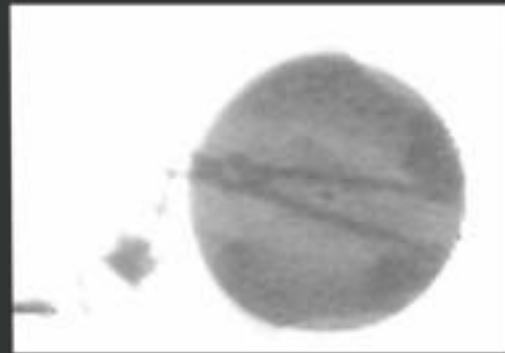


COIN

MANUFACTURER:
UNITED CUTLERY
MADE IN TAIWAN

COMPOSITION:
METAL

NOTE:
APPEARS TO BE
A NORMAL
SILVER DOLLAR
KEY CHAIN. THIS
KNIFE MAY VARY
IN STYLE AND
BLADE TYPES.

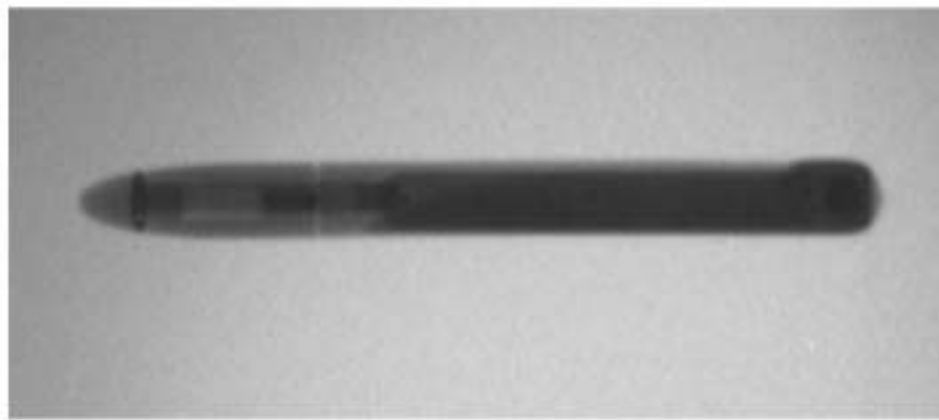


DELTA PEN

MANUFACTURER:
UNKNOWN
MADE IN ?

COMPOSITION:
METAL

NOTE: LOOKS LIKE
AN INK PEN WHICH
CAN BE OPENED TO
EXPOSE A KNIFE
BLADE.

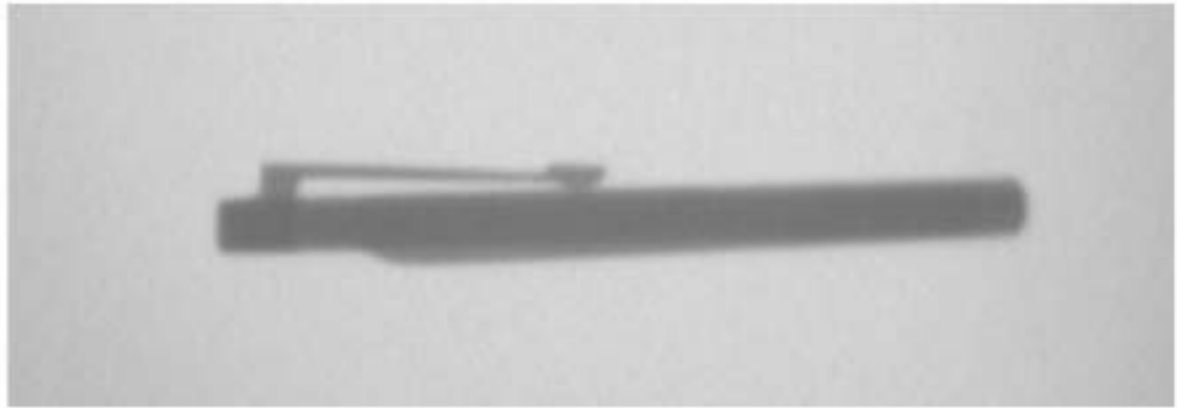


EXECUTIVE PEN

MANUFACTURER:
UNKNOWN
MADE IN USA

COMPOSITION:
METAL

NOTE: LOOKS LIKE
A PEN WHICH CAN
BE OPENED TO
EXPOSE A KNIFE
BLADE. COMES IN
VARIOUS SIZES.



AUTO-SPIKE

MANUFACTURER:
S.W.A.T.
MADE IN USA

COMPOSITION:
METAL SPIKE
WITH METAL
HANDLE

NOTE: SPRING
LOADED SPIKE
DEPLOYED BY
AUTO RELEASE.



WALKER SWORD

MANUFACTURER:
UNKNOWN
MADE IN USA

COMPOSITION:
METAL

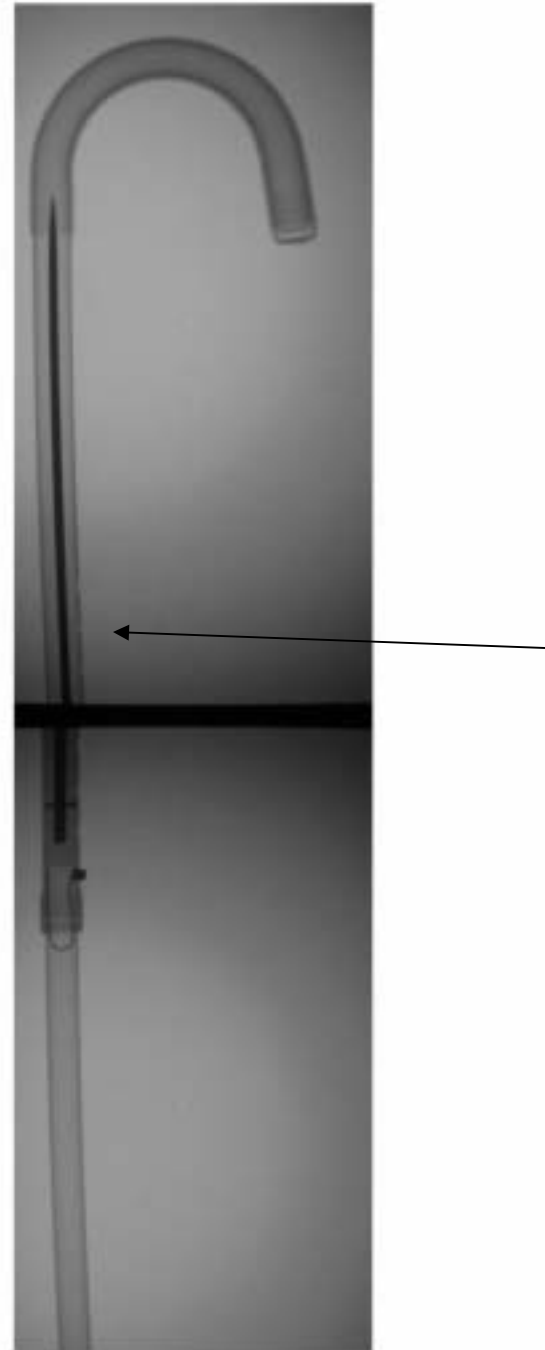
NOTE: LOOKS LIKE
AN ORDINARY
WALKING CANE.
EXPANDABLE SHAFT
CAN BE REMOVED
FROM HANDLE
PORTION TO EXPOSE
KNIFE BLADE.

**CANE
LENGTH
36 inches**





THE SHAFT OF THIS CANE
IS REMOVED TO EXPOSE THE KNIFE
BLADE. THE BLADE COULD ALSO BE
FITTED IN A WALKER/CRUTCH.



CANE SWORD

MANUFACTURER:
MADE IN USA

COMPOSITION:
METAL

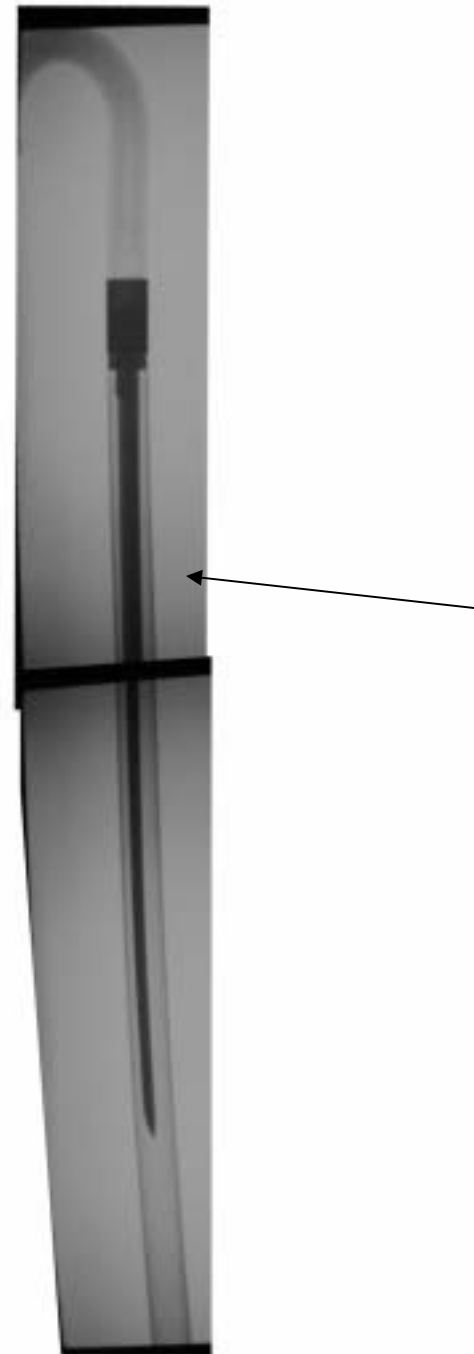
NOTE: LOOKS LIKE
AN ORDINARY
CANE. HANDLE
UNSCREWS TO
EXPOSE KNIFE
BLADE.

**CANE
HEIGHT
36 inches**





THE HANDLE OF THE CANE
IS REMOVED TO EXPOSE
THE KNIFE BLADE.



SWORD UMBRELLA

MANUFACTURER:
ATLANTA CUTLERY
MADE IN USA

COMPOSITION:
METAL AND
PLASTIC

NOTE:
APPEARS AS A
NORMAL FOLDING
UMBRELLA,
HANDLE PULLS
FREE TO EXPOSE
A 10-INCH STEEL
SPIKE.

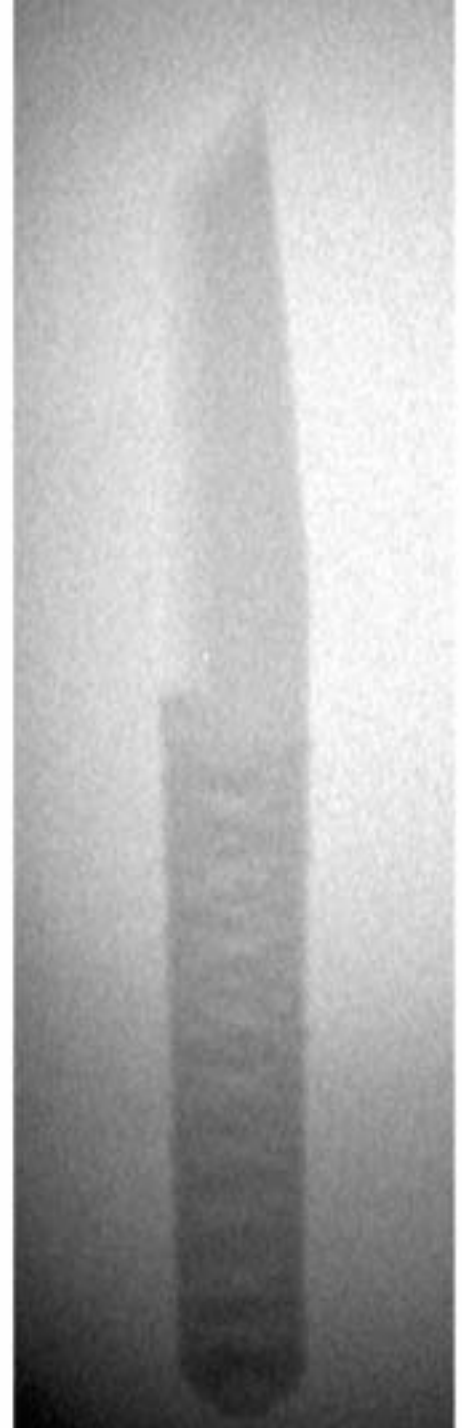


CARBON FIBER KNIFE

MANUFACTURER:
UNKNOWN
MADE IN USA

COMPOSITION: PLASTIC

NOTE:
ALL PLASTIC MAKING THIS
“INVISIBLE” TO
AMAGNATOMETER.

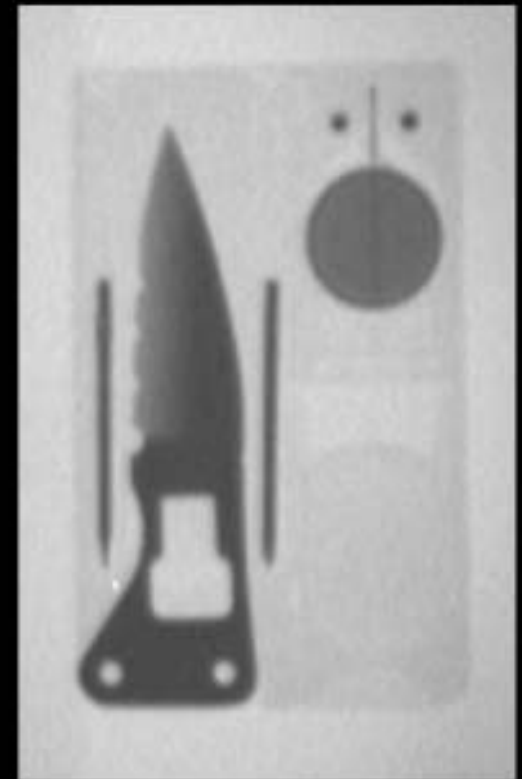


TOOL CARD

MANUFACTURER:
UNKNOWN

COMPOSITION:
PLASTIC WITH
METAL KNIFE
BLADE

NOTE:
MAGNIFYING
GLASS, TWO
SCREWDRIVERS
AND FLASHLIGHT
DESIGNED TO BE
THE APPROX-
IMATE SIZE OF A
CREDIT CARD
THAT CAN
BE CARRIED IN A
POCKET.



BULLET
(CARTRIDGE)
KNIFE

MANUFACTURER:
UNITED CUTLERY
MADE IN ITALY

COMPOSITION:
METAL BLADE
INSIDE OF
CARTRIDGE

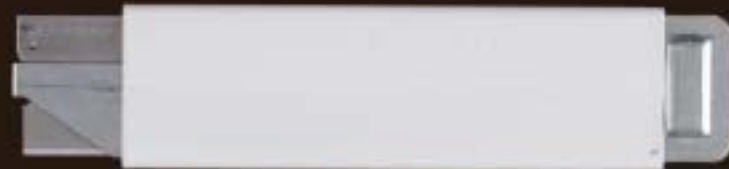
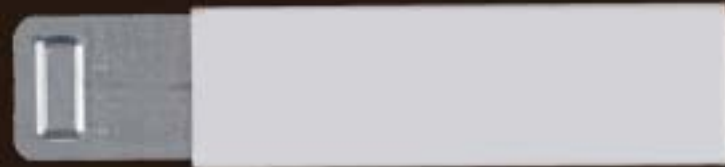
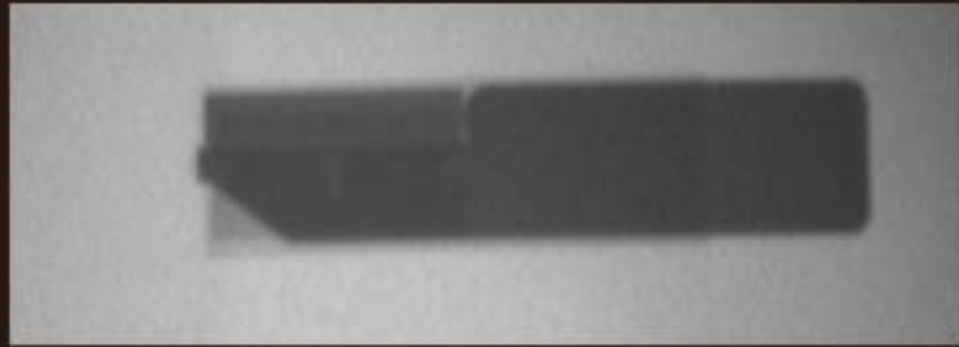
NOTE: LOOKS
LIKE A
CARTRIDGE FOR
A HANDGUN.
HEADSTAMP
READS "30-06
SPRG".



BOX CUTTER

MANUFACTURER:
UNKNOWN
MADE IN USA

COMPOSITION:
METAL RAZOR
BLADE WITH
METAL
HANDLE.



CERAMIC KNIFE

MANUFACTURER:
KYOCERA,
MADE IN JAPAN

COMPOSITION:
CERAMIC BLADE
WITH PLASTIC
HANDLE

NOTE:
CERAMIC
AND
PLASTIC;
MAKING IT
"INVISIBLE"
TO A
MAGNATO-
METER.

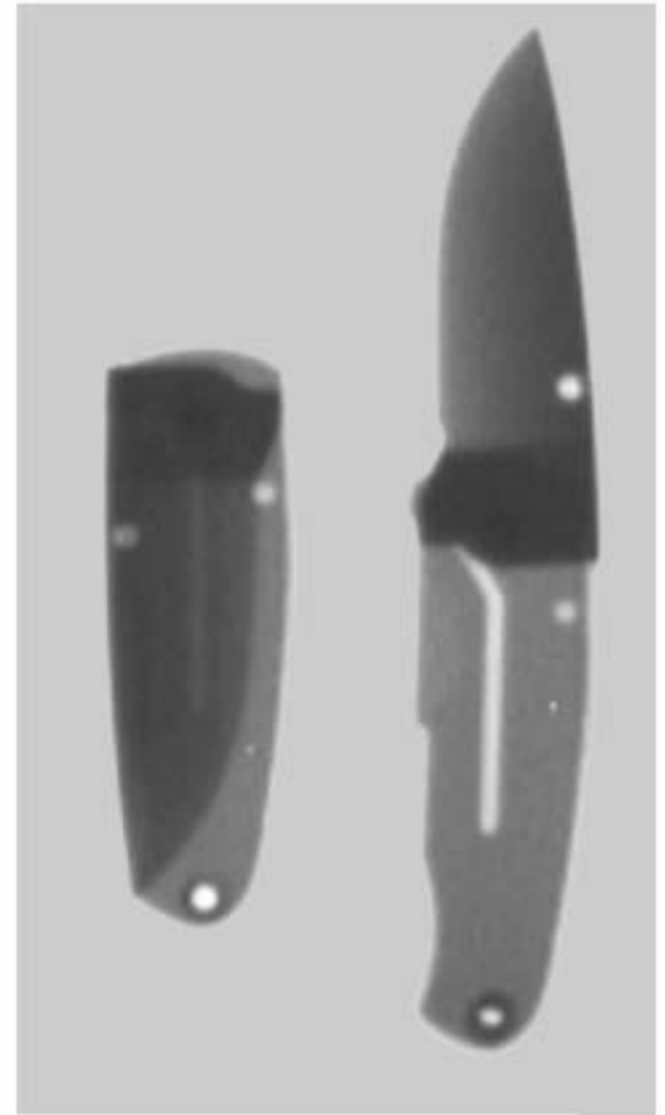


CERAMIC FOLDING KNIFE

MANUFACTURER:
BOKER KNIVES, MODEL
GAMMA
MADE IN GERMANY

COMPOSITION:
PLASTIC CASE WITH
CERAMIC BLADE AND
METAL RIVETS AND
LINER LOCK

NOTE: MINIMAL
AMOUNT OF METAL
MAKES THIS KNIFE
“INVISIBLE” TO A
MAGNATOMETER.

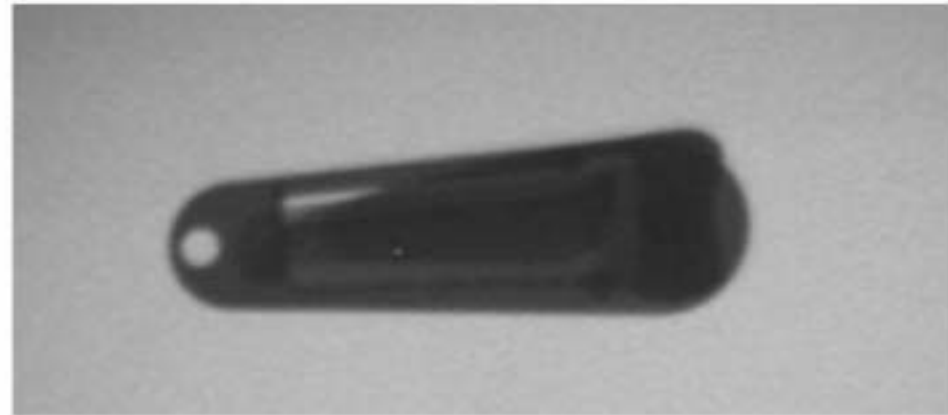


FOLDING KNIFE

MANUFACTURER:
COAST KNIVES
MADE IN TAIWAN

COMPOSITION: METAL
BLADE AND HANDLE

NOTE: SMALL FOLDING
KNIFE WITH
POCKET/MONEY CLIP.

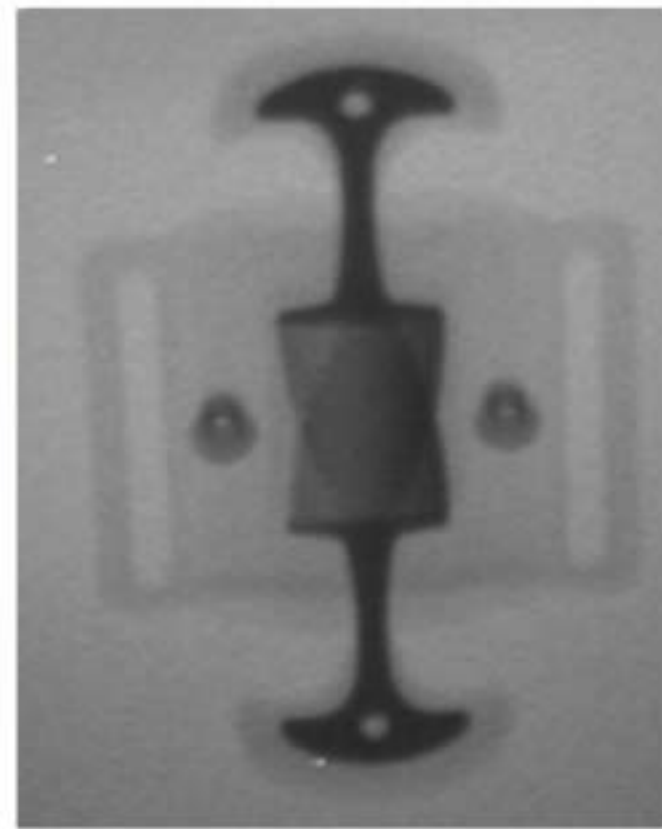


DOUBLE -HANDED DAGGER

MANUFACTURER:
UNKNOWN
MADE IN ?

COMPOSITION:
METAL BLADE
WITH PLASTIC
HANDLE

NOTE: CAN BE
WORN ON BELT
OR WITH
WRIST/ANKLE
STRAP.



TOOL CARD

MANUFACTURER:
UNKNOWN

COMPOSITION:
PLASTIC CASE
WITH METAL
KNIFE BLADE,
MAGNIFYING
GLASS, TWO
SCREWDRIVERS,
AND FLASHLIGHT

NOTE: DESIGNED
TO BE THE
APPROXIMATE
SIZE OF A CREDIT
CARD THAT CAN
BE CARRIED IN A
POCKET.

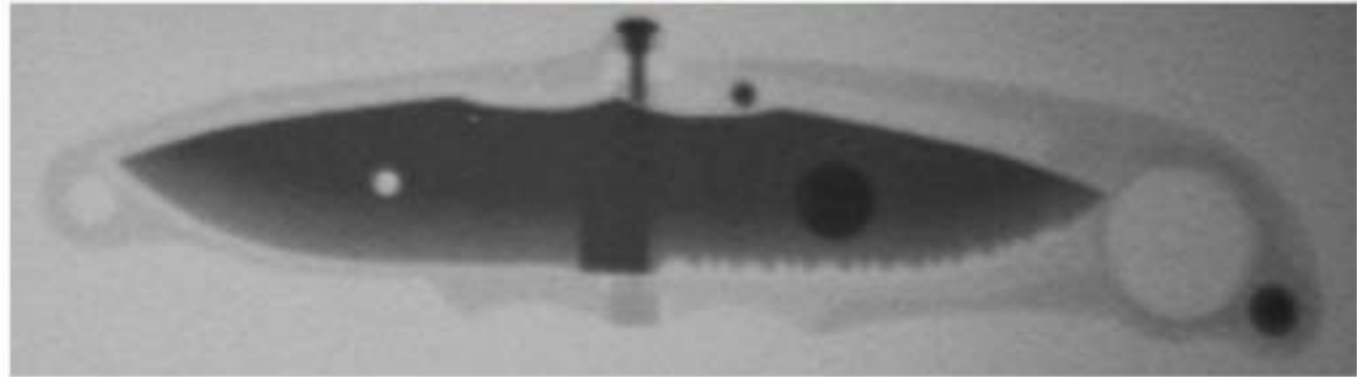


DUO KNIFE

MANUFACTURER:
SOG
MADE IN JAPAN

COMPOSITION:
REVERSIBLE
METAL BLADE
WITH PLASTIC
HANDLE

NOTE: PLASTIC
HANDLE FOLDS
TO EXPOSE
EITHER PLAIN OR
SERRATED EDGE
OF REMOVABLE
KNIFE BLADE.

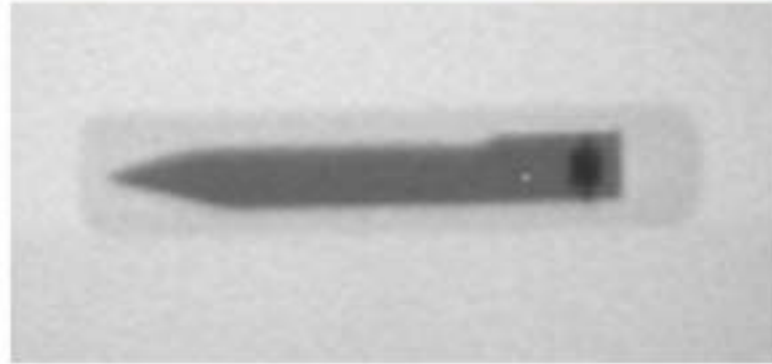


FLIP KNIFE

MANUFACTURER:
FLIP-IT
MADE IN USA

COMPOSITION:
PLASTIC AND
METAL

NOTE: KNIFE
BLADE IS
DEPLOYED BY
LIFTING HANDLE
INSERT, SLIDING IT
FORWARD,
AND FLIPPING IT
OVER TO LOCK THE
BLADE IN PLACE.

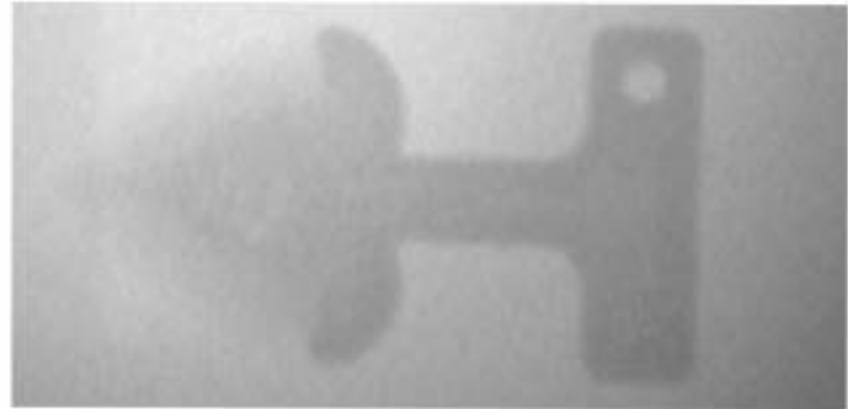


PUSH DAGGER

MANUFACTURER:
UNKNOWN
MADE IN ?

COMPOSITION: PLASTIC

NOTE: ALL PLASTIC,
MAKING THIS "INVISIBLE"
TO A MAGNATOMETER.

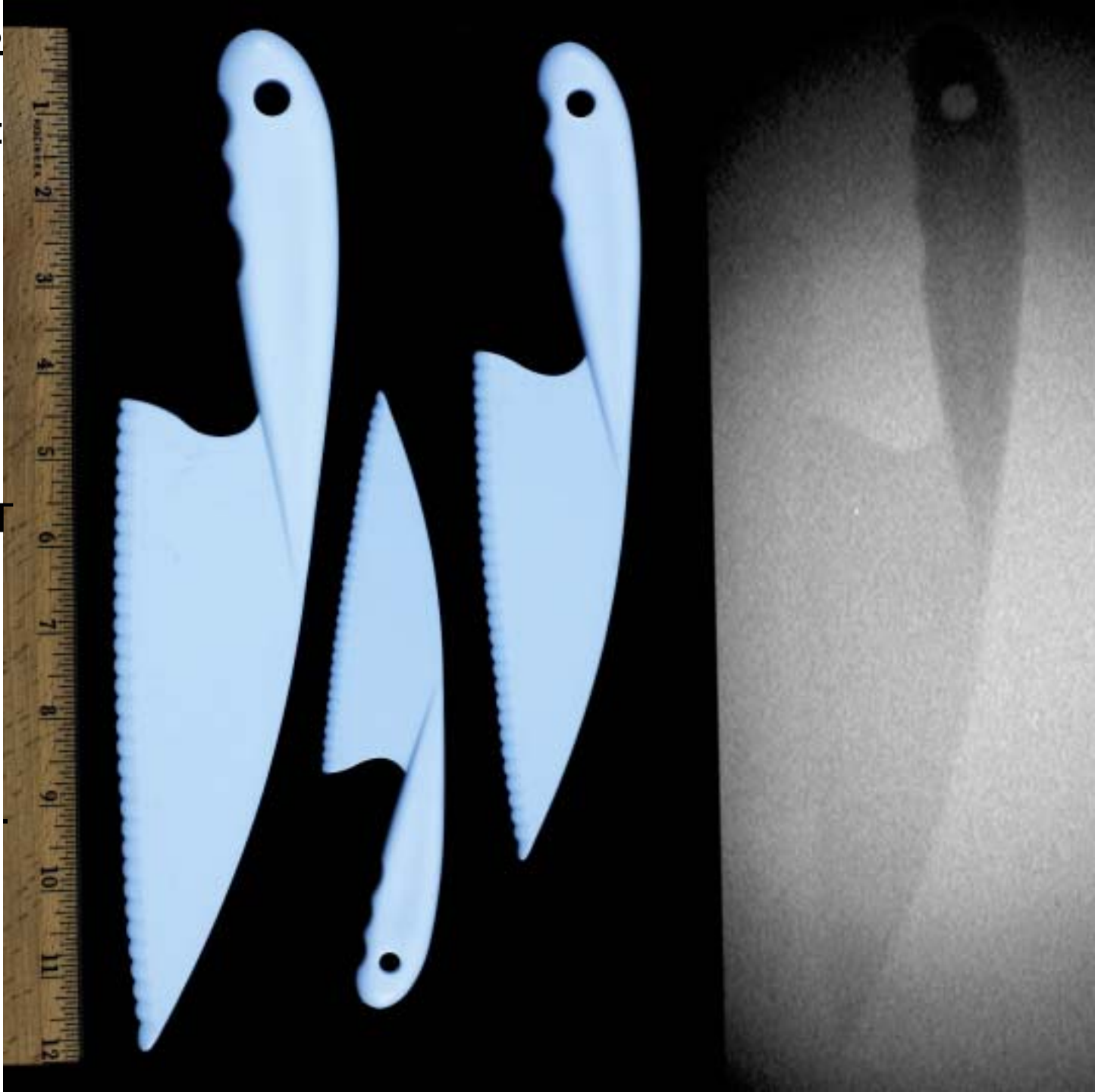


LETTUCE KNIVES

MANUFACTURER:
UNKNOWN
MADE IN ?

COMPOSITION:
PLASTIC

NOTE:
INEXPENSIVE SET
OF THREE
VARIOUS-SIZED
KNIVES WHICH
ARE "INVISIBLE"
TO A
MAGNATOMETER.

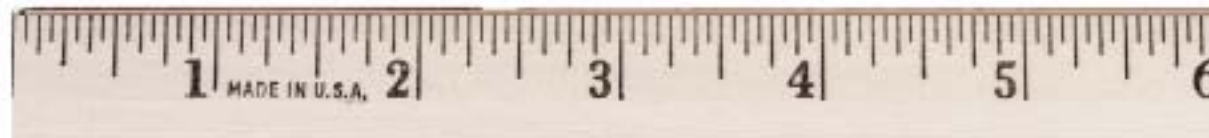


LIGHTER KNIFE

MANUFACTURER:
UNKNOWN
MADE IN ?

COMPOSITION: METAL

NOTE: WORKING LIGHTER
THAT DEPLOYS A KNIFE
BLADE BY ACTIVATION OF
A BUTTON ON THE SIDE.



LIGHTER KNIFE

MANUFACTURER:
UNKNOWN
MADE IN ?

COMPOSITION:
METAL

NOTE: WORKING
LIGHTER THAT
DEPLOYS A KNIFE
BLADE BY
ACTIVATION OF A
BUTTON ON THE
SIDE.



LIGHTER KNIFE

MANUFACTURER:
HOWELL
MADE IN KOREA

COMPOSITION:
METAL

NOTE: WORKING
LIGHTER THAT
STORES A KNIFE
BLADE, NAIL FILE,
AND SCISSORS.



CIGARETTE LIGHTER KNIFE

MANUFACTURER:
UNKNOWN
MADE IN ?

COMPOSITION:
METAL KNIFE
BLADE IN METAL CASE
HANDLE

NOTE: THIS WORKING
LIGHTER CONCEALS AN
AUTOMATIC KNIFE.

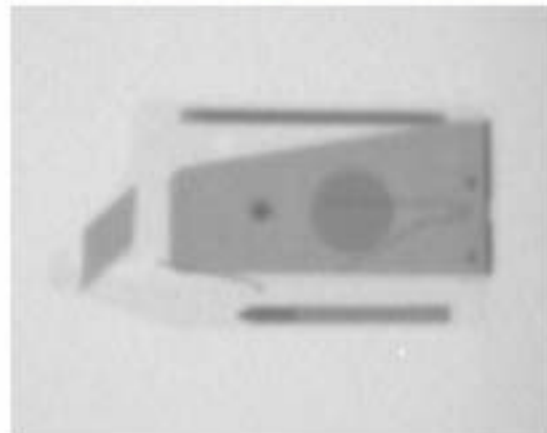
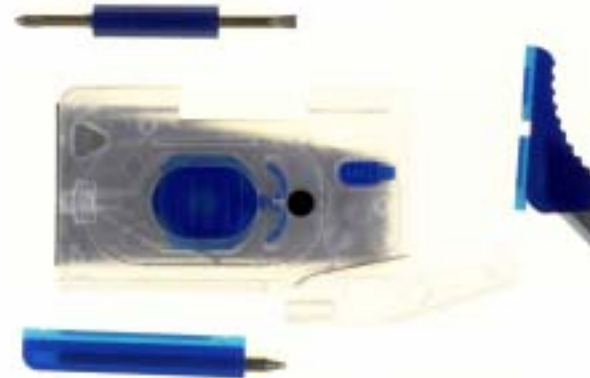
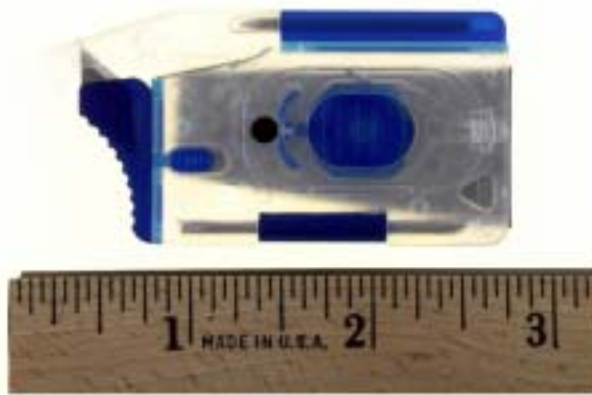


TOOL CARD/MONEY CLIP

MANUFACTURER:
UNKNOWN
MADE IN USA

COMPOSITION:
PLASTIC AND METAL

NOTE: THIS MONEY
CLIP STORES A
BLADE, TWO
SCREWDRIVERS,
AND A FLASHLIGHT.

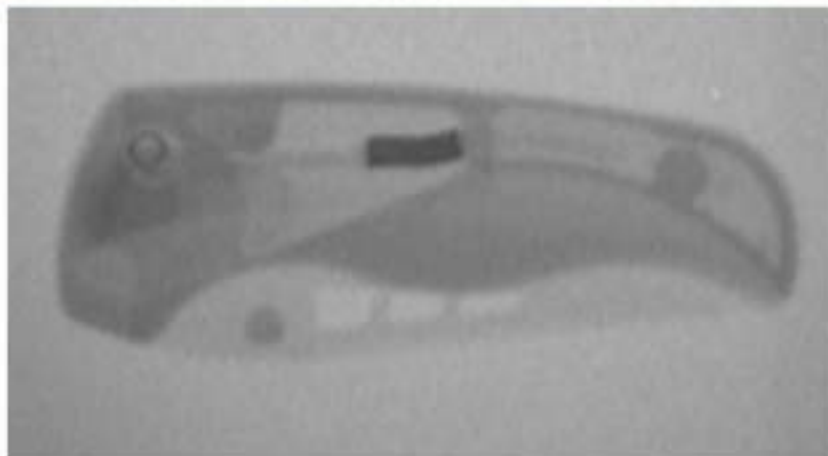


PLASTIC FOLDING
KNIFE

MANUFACTURER:
MEYERCO
MADE IN USA

COMPOSITION:
PLASTIC AND
METAL

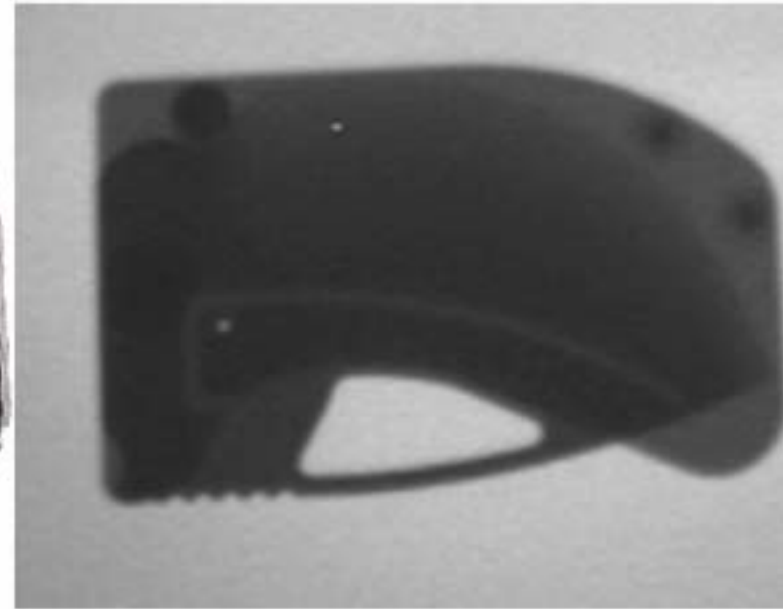
NOTE: THE KNIFE IS
ALL-PLASTIC
CONSTRUCTION,
EXCEPT FOR A
SMALL SPRING TO
ASSIST IN OPENING



CARD KNIFE

MANUFACTURER:
UNKNOWN
MADE IN USA

COMPOSITION:
PLASTIC AND
METAL

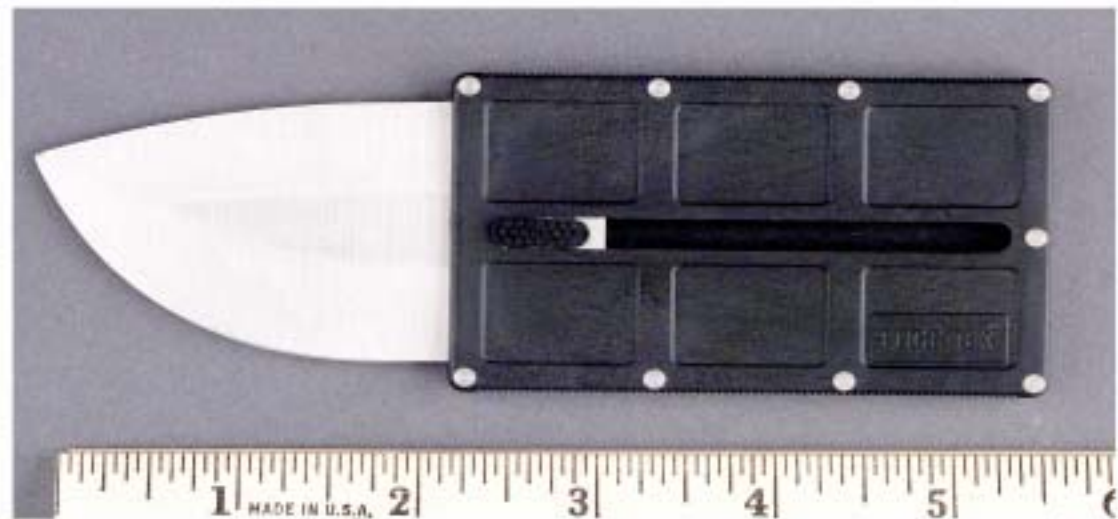
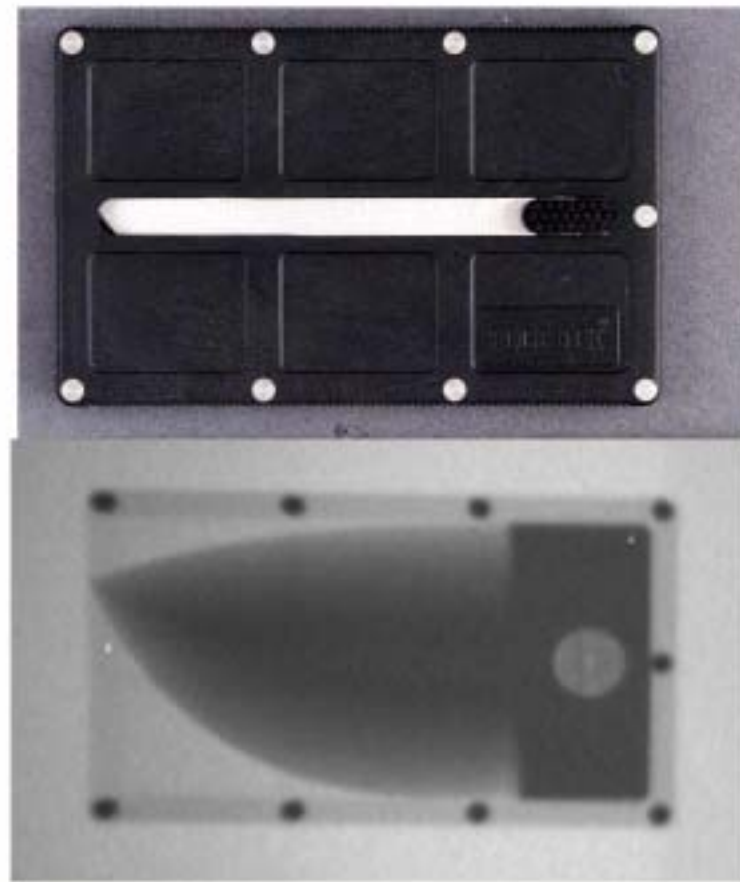


CARD KNIFE

MANUFACTURER:
EDGE-TEK
MADE IN USA

COMPOSITION: PLASTIC
AND METAL

NOTE: BLADE SLIDES
OUT OF HANDLE.

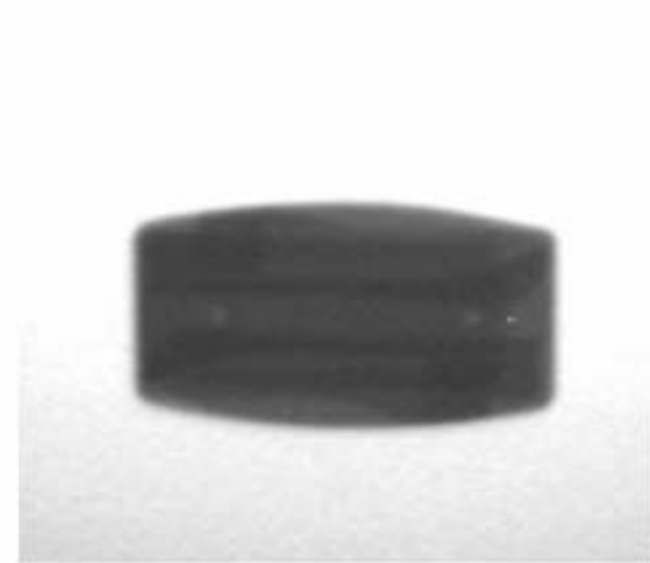


MONEY CLIP KNIFE

MANUFACTURER:
ZIPPO
MADE IN USA

COMPOSITION:
METAL

NOTE: MONEY-CLIP
HOUSES A KNIFE
BLADE AND NAIL
FILE.

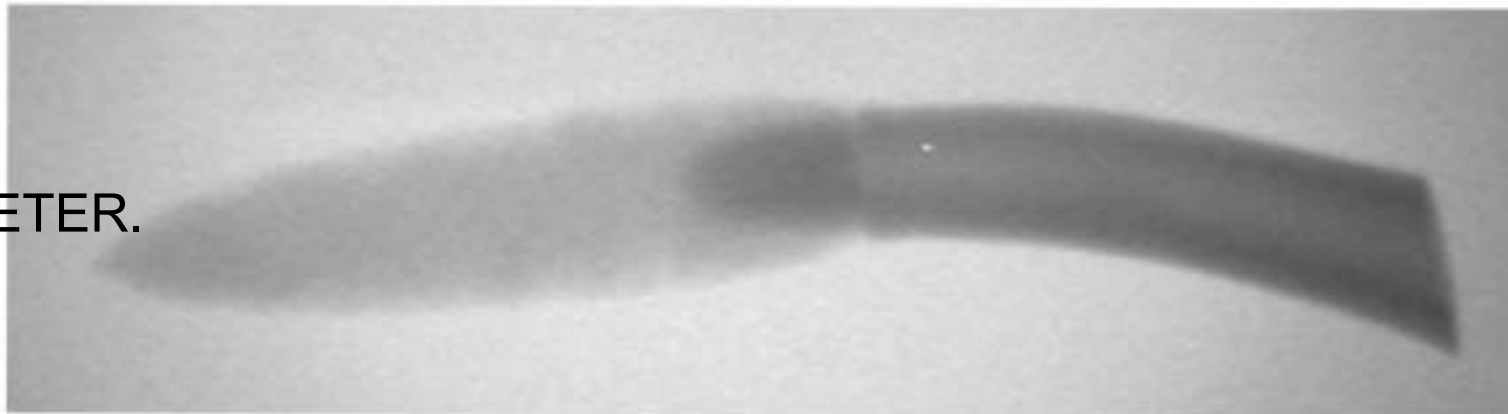


OBSIDIAN KNIFE

MANUFACTURER:
THESE KNIVES ARE
CUSTOM MADE

COMPOSITION:
OBSIDIAN BLADE
WITH A BONE
HANDLE

NOTE: THERE
IS NO METAL
USED IN THIS
KNIFE,
MAKING IT
"INVISIBLE" TO
A MAGNATOMETER.

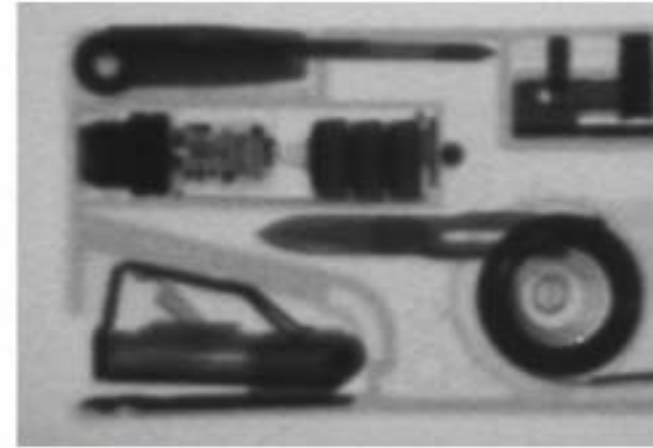


OFFICE COMPANION

MANUFACTURER:
MADE IN USA

COMPOSITION:
PLASTIC AND
METAL

NOTE: LOOKS
LIKE AN INK PEN
WHICH CAN
EJECT PEPPER
SPRAY.

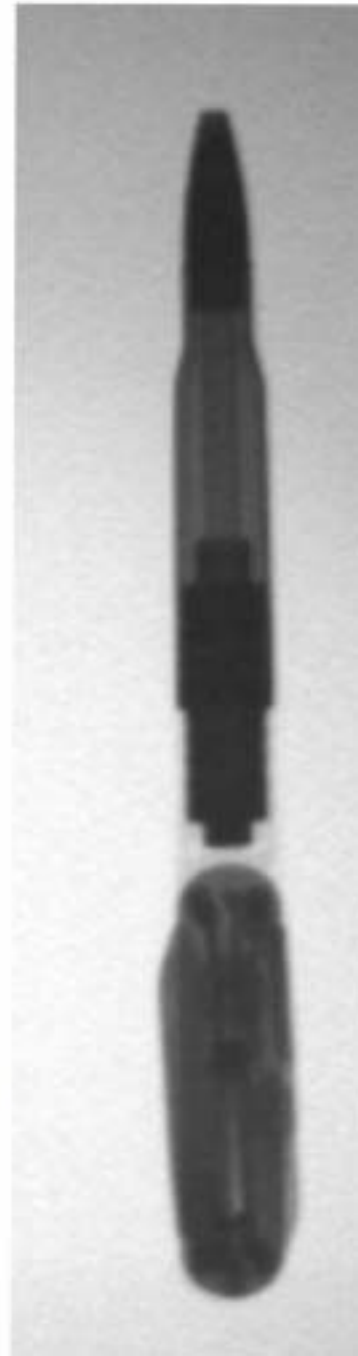


INK PEN KNIFE

MANUFACTURER:
VICTORINOX
MADE IN
SWITZERLAND

COMPOSITION:
METAL BLADE
WITH PLASTIC
HANDLE

NOTE: KNIFE
BLADE, NAIL FILE,
SCISSORS, AND
FLASHLIGHT ALL
STORED IN PEN
HANDLE. PEN
LOOKS LIKE A
RIFLE CARTRIDGE.



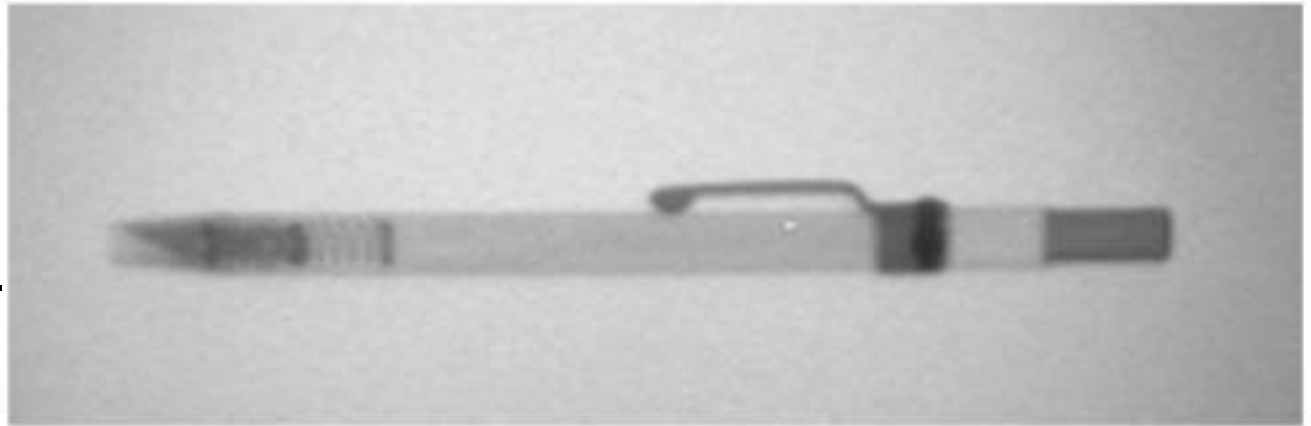
RAZOR KNIFE

MANUFACTURER:
X-CALIBRE
MADE IN ?



COMPOSITION:
ALL METAL

NOTE: LOOKS
LIKE AN INK PEN.
PUSH BUTTON
DEPLOYS BLADE.



INK PEN KNIFE

MANUFACTURER:
UNKNOWN
MADE IN USA

COMPOSITION:
METAL

NOTE: LOOKS LIKE
AN INK PEN.
KNIFE BLADE
FOLDS IN THE
SIDE OF THE
PEN.

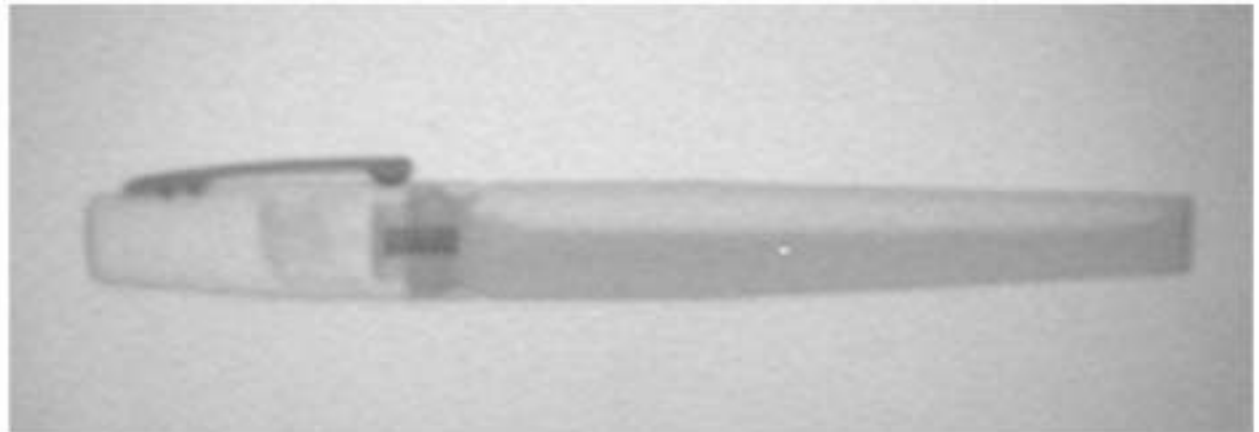


INK PEN PEPPER SPRAY

MANUFACTURER:
UNKNOWN
MADE IN USA



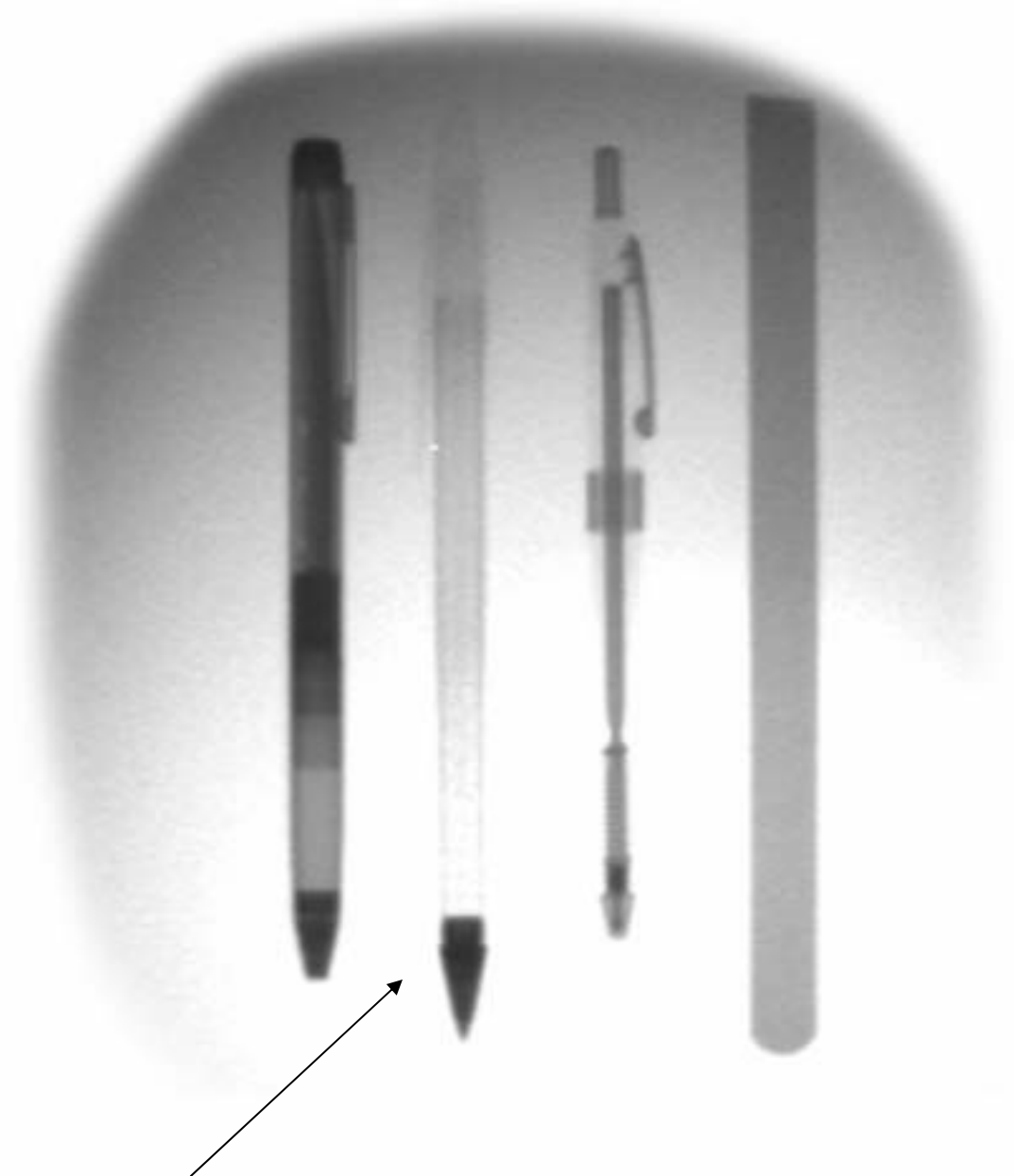
COMPOSITION:
PLASTIC AND
METAL



NOTE: LOOKS LIKE
AN INK PEN WHICH
CAN EJECT
PEPPER SPRAY.



Xray of PENKNIFE with
other pens; penknife is the
second from the left.



PEN-TYPE KNIVES IN A POCKET

NOTE: THIS
PHOTOGRAPH
SHOWS THE
PROFILE OF THE
VARIOUS
PENKNIVES WHEN
CARRIED IN A
POCKET.

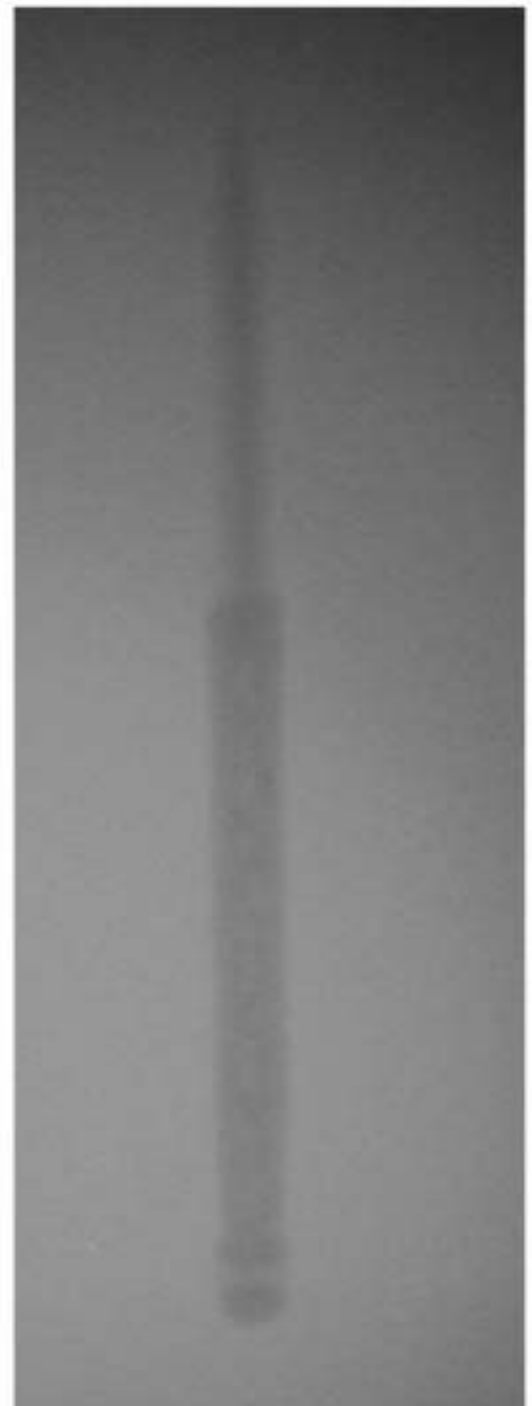


PLASTIC SPIKE

MANUFACTURER:
UNKNOWN
MADE IN ?

COMPOSITION:
POLYMER/PLASTIC

NOTE: ALL-PLASTIC
SPIKE (DAGGER),
MAKING IT "INVISIBLE"
TO A
MAGNATOMETER.

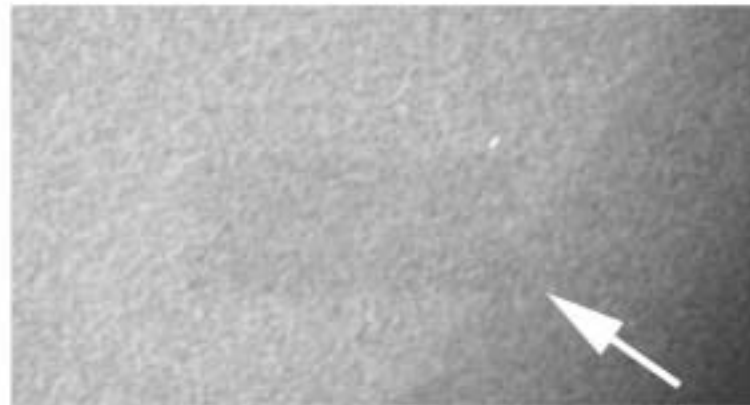
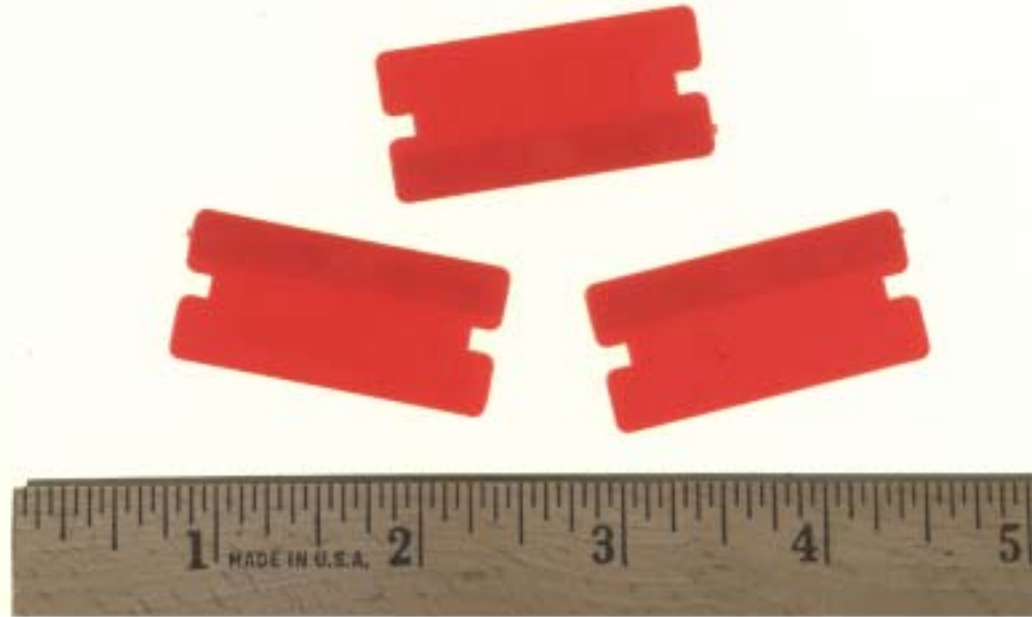


PLASTIC RAZOR BLADES

MANUFACTURER:
UNKNOWN
MADE IN CHINA

COMPOSITION:
PLASTIC

NOTE: SAME SIZE
AS STANDARD
RAZOR BLADES.
ALL PLASTIC,
MAKING IT
“INVISIBLE” TO A
MAGNATOMETER.

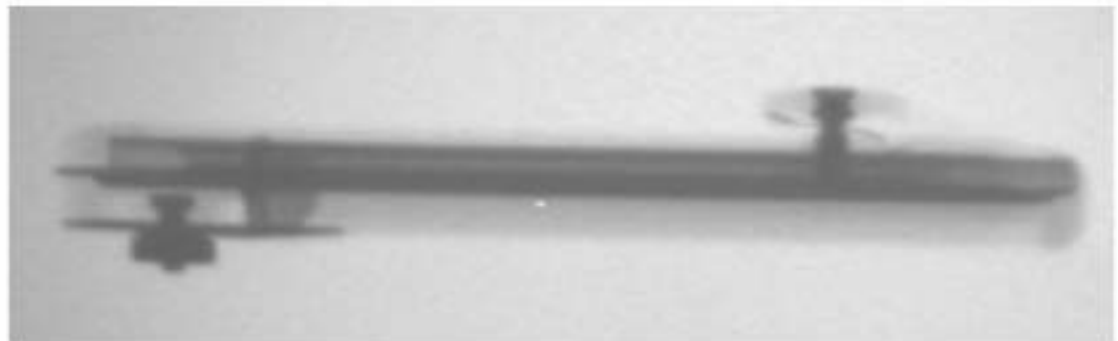
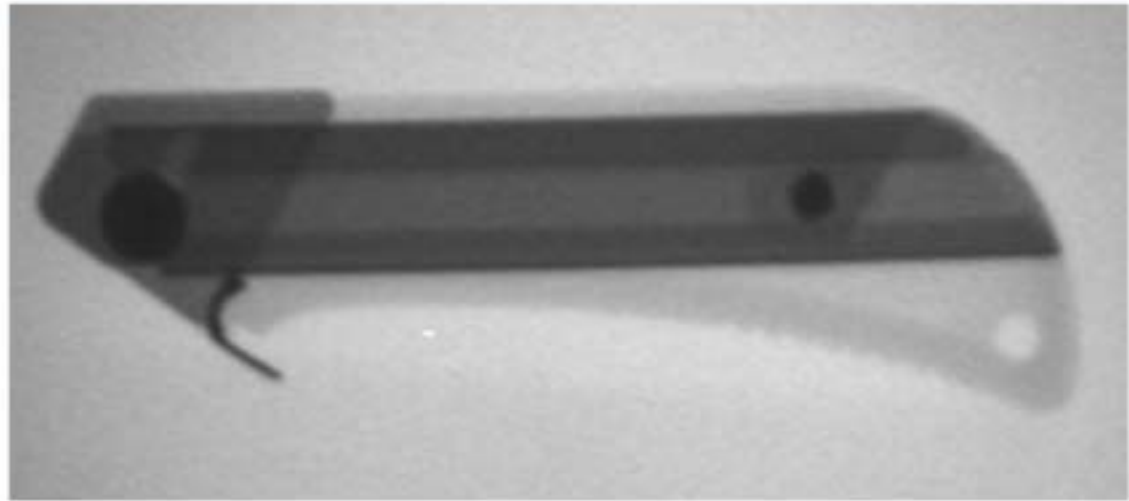


BOX CUTTER KNIFE

MANUFACTURER:
OLFA
MADE IN JAPAN

COMPOSITION:
METAL RAZOR BLADE
WITH PLASTIC
HANDLE

NOTE: RAZOR BLADE
SLIDES OUT OF
HANDLE.

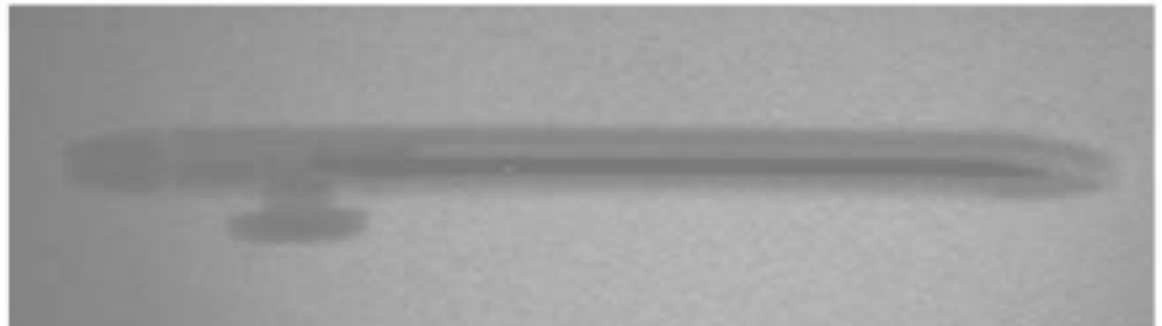
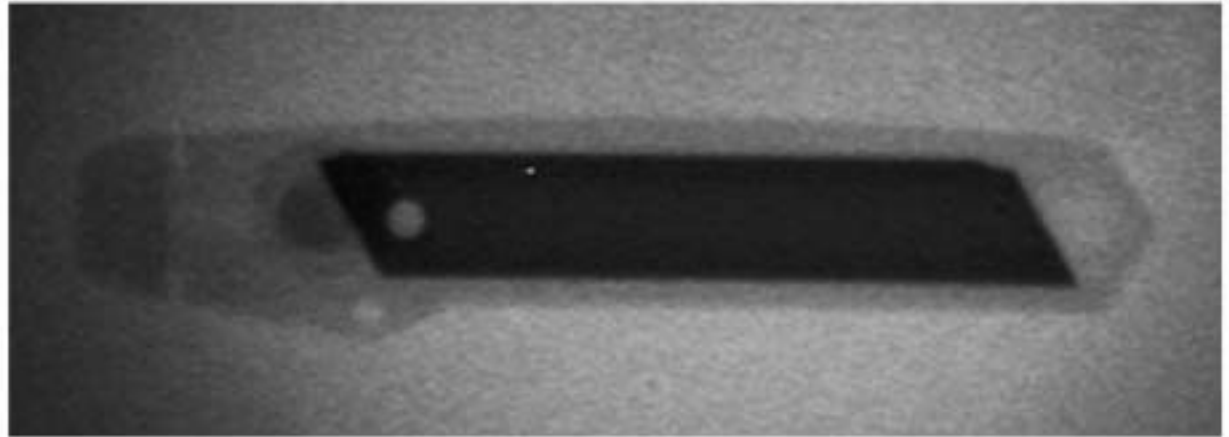


RAZOR KNIFE

MANUFACTURER:
UNKNOWN
MADE IN TAIWAN

COMPOSITION:
METAL RAZOR
BLADE WITH
PLASTIC HANDLE

NOTE: RAZOR
BLADE SLIDES OUT
OF HANDLE.



BULLET (CARTRIDGE)
KNIFE

MANUFACTURER:
UNITED CUTLERY
MADE IN ITALY

COMPOSITION: METAL
BLADE INSIDE OF METAL
CARTRIDGE

NOTE: LOOKS LIKE A
RIFLE CARTRIDGE.
HEADSTAMP READS
"30-06 SPRG".



RING KNIFE

MANUFACTURER
BATES
MADE IN USA

COMPOSITION:
METAL BLADE
WITH RING

NOTE: BLADE
ATTACHED TO A
RING.
COMMONLY
USED TO
CUT STRINGS ON
PACKAGES AND
HAY BAILS.



SHUCKRA

MANUFACTURER:
UNKNOWN
MADE IN ?

COMPOSITION:
METAL

NOTES: BY
LOCKING THE
HANDLE, PUTTING
ON AN INTERNAL
WIRE, THIS DEVICE
BECOMES TAUT
AND MAY BE USED
AS A SPIKE.

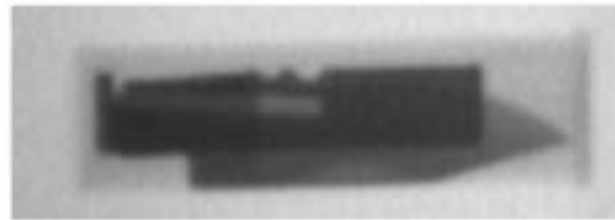


SHOTSHELL KNIFE

MANUFACTURER:
UNITED CUTLERY
MADE IN ITALY

COMPOSITION:
METAL BLADE
INSIDE PLASTIC
SHOTSHELL

NOTE: LOOKS
LIKE A
SHOTSHELL FOR
A SHOTGUN.
HEADSTAMP
READS "12-GA
REMINGTON
PETERS".

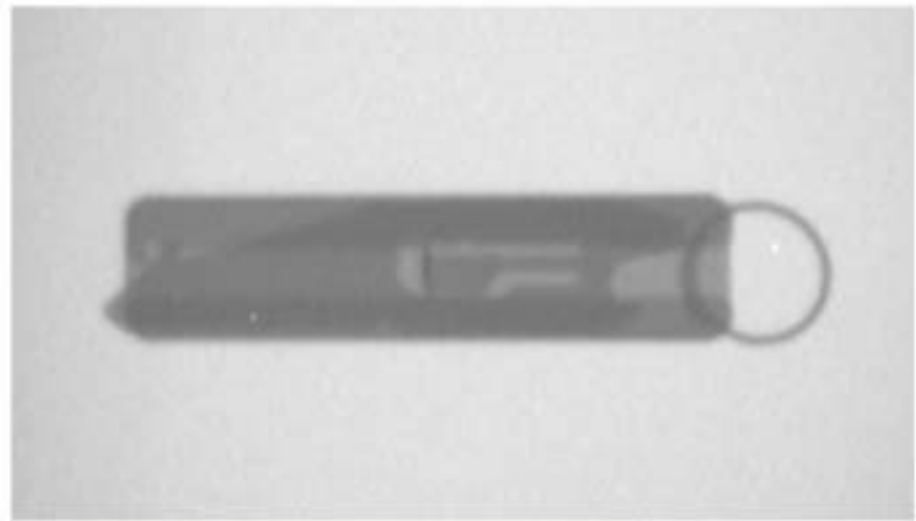


SLIDER KNIFE

MANUFACTURER: UNKNOWN
MADE IN USA

COMPOSITION: METAL
RAZOR BLADE WITH METAL
HANDLE

NOTE: HANDLE LOOKS LIKE A
RULER. THE BLADE HAS A
LOCK BUTTON WHICH
ALLOWS THE KNIFE TO BE
DEPLOYED.



SOG ACCESS
CARD

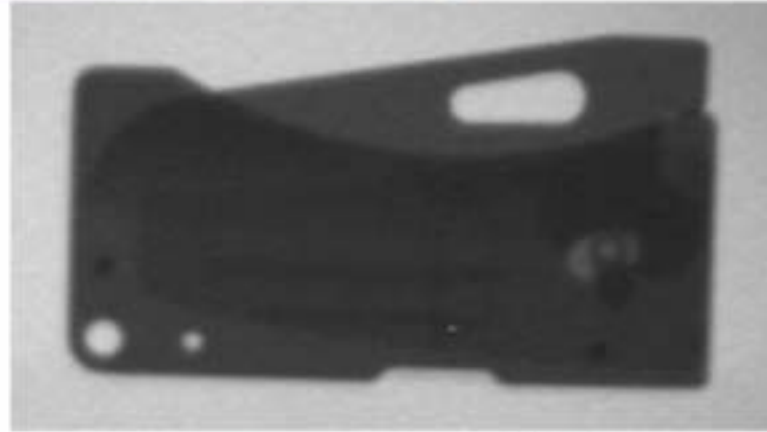
MANUFACTURER:
SOG
MADE IN JAPAN



COMPOSITION:
METAL BLADE AND
HANDLE



NOTE: THIS KNIFE
HOUSES
TWEEZERS,
TOOTHPICK, AND
STRAIGHT PIN.

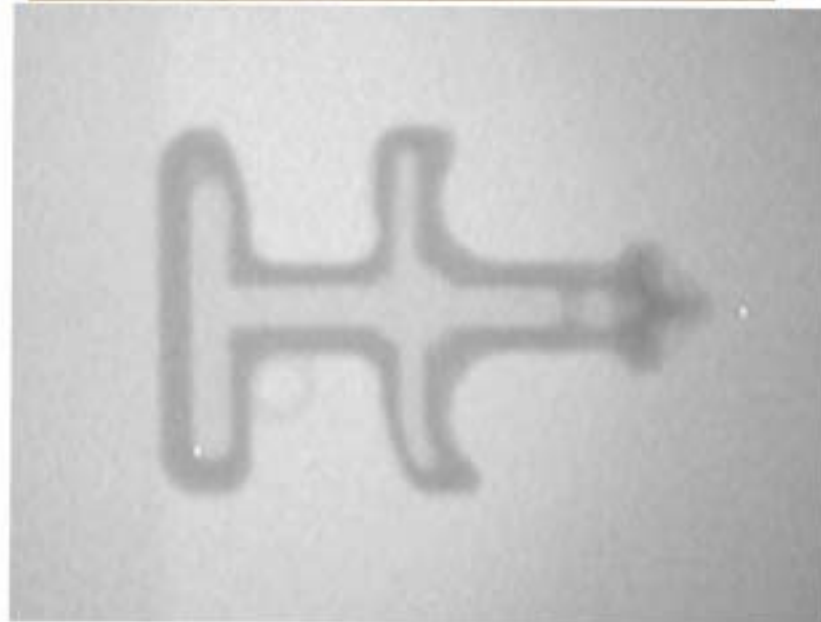


STINGER KEY
CHAIN

MANUFACTURER:
SHOMER-TEC
MADE IN USA

COMPOSITION: ALL
POLYMER/PLASTIC
STRIKING TOOL

NOTE: COMES IN
BLACK, BLUE OR
CLEAR. ALL-
PLASTIC
CONSTRUCTION,
MAKING IT
“INVISIBLE” TO A
MAGNATOMETER.

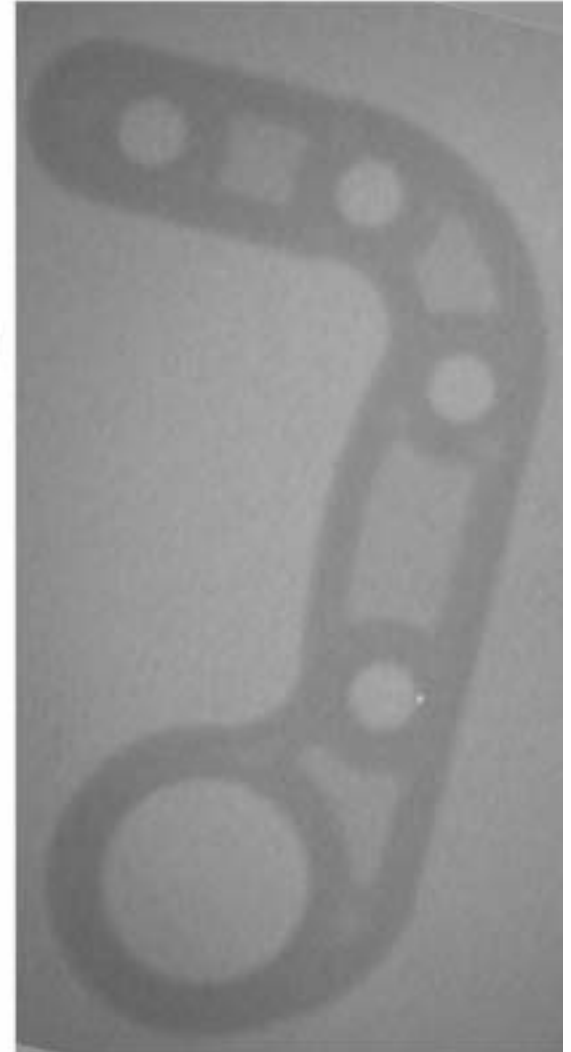


IMPACT KERAMBIT

MANUFACTURER:
SHOMER-TEC
MADE IN USA

COMPOSITION: ALL
POLYMER/PLASTIC

NOTE: THIS IMPACT
TOOL IS MADE OF
PLASTIC, MAKING IT
“INVISIBLE” TO A
MAGNATOMETER.

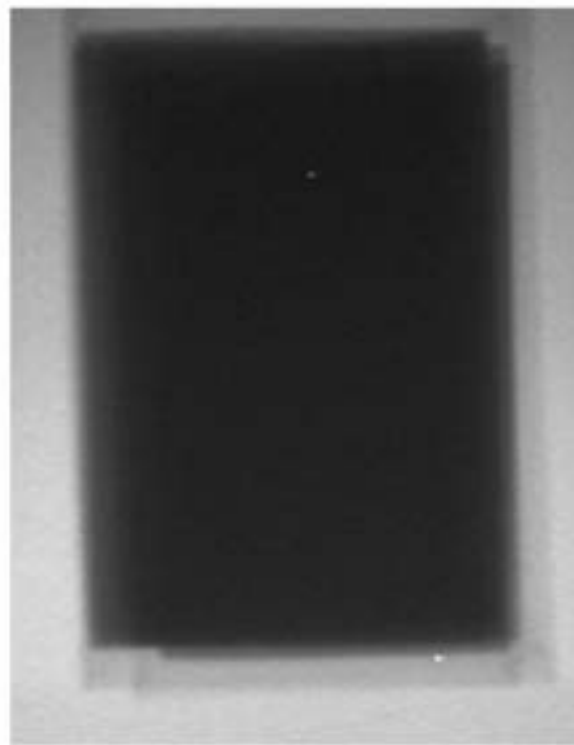


THROWING CARDS

MANUFACTURER:
UNKNOWN
MADE IN ?

COMPOSITION:
METAL

NOTE: THESE CARDS
ARE REGULAR SIZED
BUT THEY ARE ALL
METAL AND EDGED
ON
ALL SIDES,
DESIGNED TO BE
THROWN AT A
TARGET.



TITANIUM
CHARGE CARD
PLUS

MANUFACTURER:
SHOMER-TEC
MADE IN USA

COMPOSITION:
METAL

NOTE: EDGED ON
ONE SIDE, THIS
CARD IS
DESIGNED TO FIT
IN YOUR WALLET
AS A CREDIT
CARD.

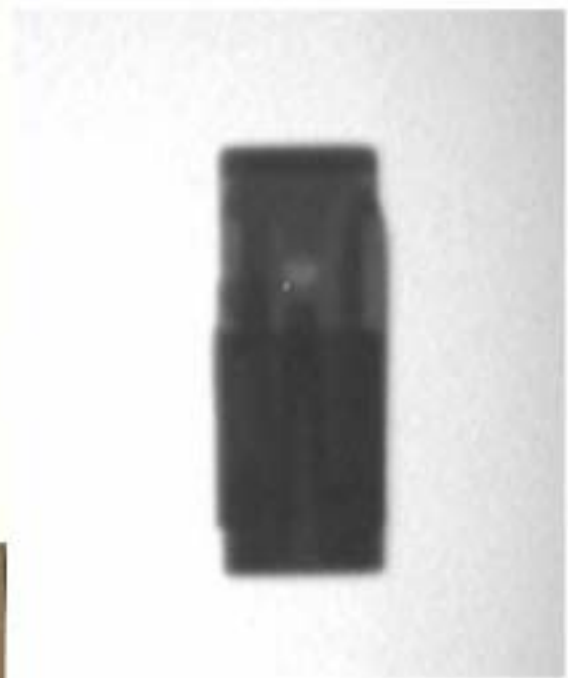


MONEY CLIP

MANUFACTURER:
KERSHAW
MADE IN JAPAN

COMPOSITION:
METAL

NOTE: MONEY CLIP
CONCEALS A
BLADE, NAIL FILE,
AND SCISSORS.



LIPSTICK

MANUFACTURER:
UNITED CUTLERY
MADE IN TAIWAN

COMPOSITION:
PLASTIC CASE
WITH METAL BAND

NOTE:
APPEARS TO BE A
COSMETIC;
BLADE EXTENDS
BY SLIDING THE
BUTTON ALONG
THE SIDE OF THE
CASE.

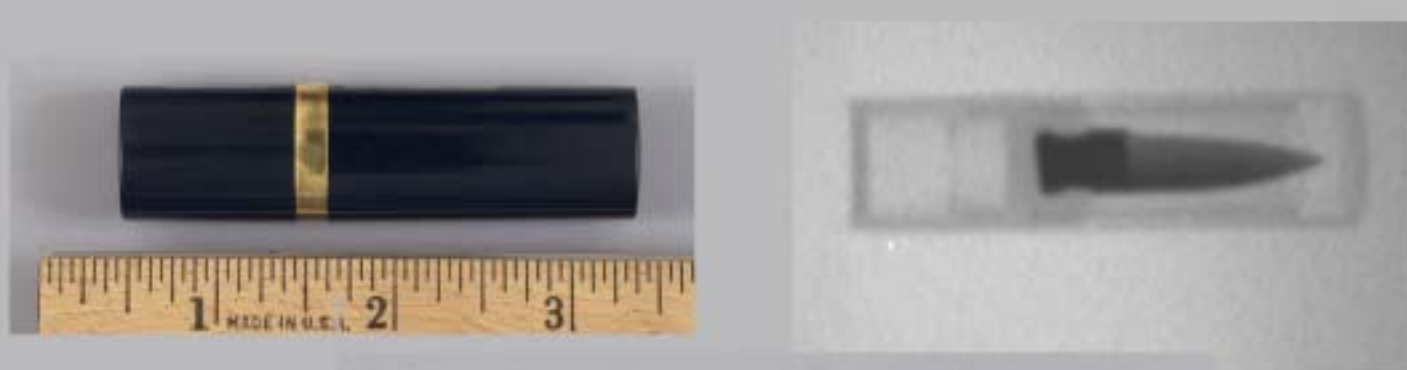


LIPSTICK

MANUFACTURER:
UNITED CUTLERY
MADE IN TAIWAN

COMPOSITION:
PLASTIC CASE WITH
METAL BAND

NOTE:
APPEARS TO BE A
COSMETICS, BLADE
EXTENDS BY
TWISTING THE
CASE.



CARD KNIFE

MANUFACTURER:
SPYDERCO
MADE IN JAPAN
COMPOSITION:
METAL

NOTE: MANY
COMPANIES
MAKE CREDIT
CARD-SIZED
KNIVES, STYLES
VARY BY
MANUFACTURER.



PLASTIC KNIFE

MANUFACTURER:
LANSKY
MADE IN USA

COMPOSITION:
PLASTIC

NOTE:
KNIVES SIMILAR
TO THIS ARE MADE
BY OTHER
COMPANIES,
STYLE OF KNIFE
MAY VARY BY
MANUFACTURER.



PENKNIFE

MANUFACTURER:
UNITED CUTLERY
MADE IN TAIWAN

COMPOSITION:
METAL

NOTE:
STYLES VARY TO
INCLUDE
DIFFERENT
BLADE STYLES
AND CASE
COLORS.

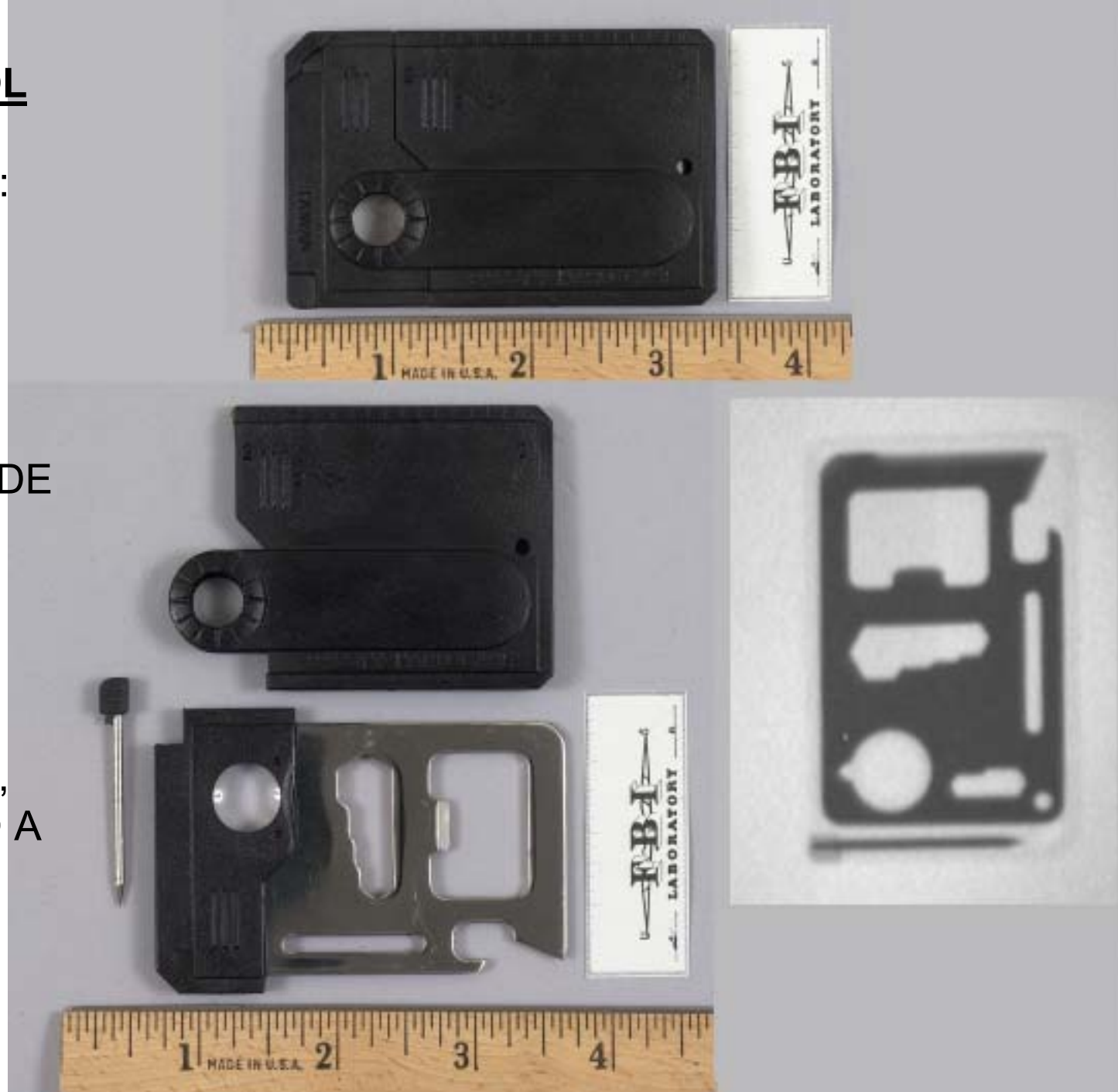


**CREDIT CARD
STYLE UTILI-TOOL**

MANUFACTURER:
UNKNOWN
MADE IN TAIWAN

COMPOSITION:
PLASTIC CASE
WITH METAL BLADE

NOTE:
INCLUDES A CAN
OPENER,
SCREWDRIVER,
BOTTLE OPENER,
WRENCHES, AND A
MAGNIFYING
GLASS.



COMB

MANUFACTURER:
UNITED CUTLERY
MADE IN TAIWAN

COMPOSITION:
PLASTIC

NOTE:
APPEARS TO BE A
NORMAL COMB.
HANDLE PULLS
FROM HEAD WHICH
ACTS AS A SHEATH.



HAIRBRUSH

MANUFACTURER:
UNITED CUTLERY
MADE IN TAIWAN

COMPOSITION:
PLASTIC

NOTE:
APPEARS TO BE
A NORMAL
HAIRBRUSH.
HANDLE PULLS
FROM HEAD
WHICH ACTS AS
A SHEATH.



BOX CUTTER KNIFE

MANUFACTURER:
OLFA
MADE IN JAPAN

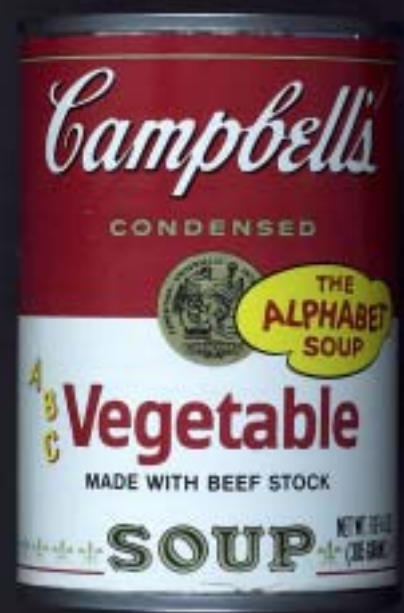
COMPOSITION:
PLASTIC CASE
WITH METAL
BLADE

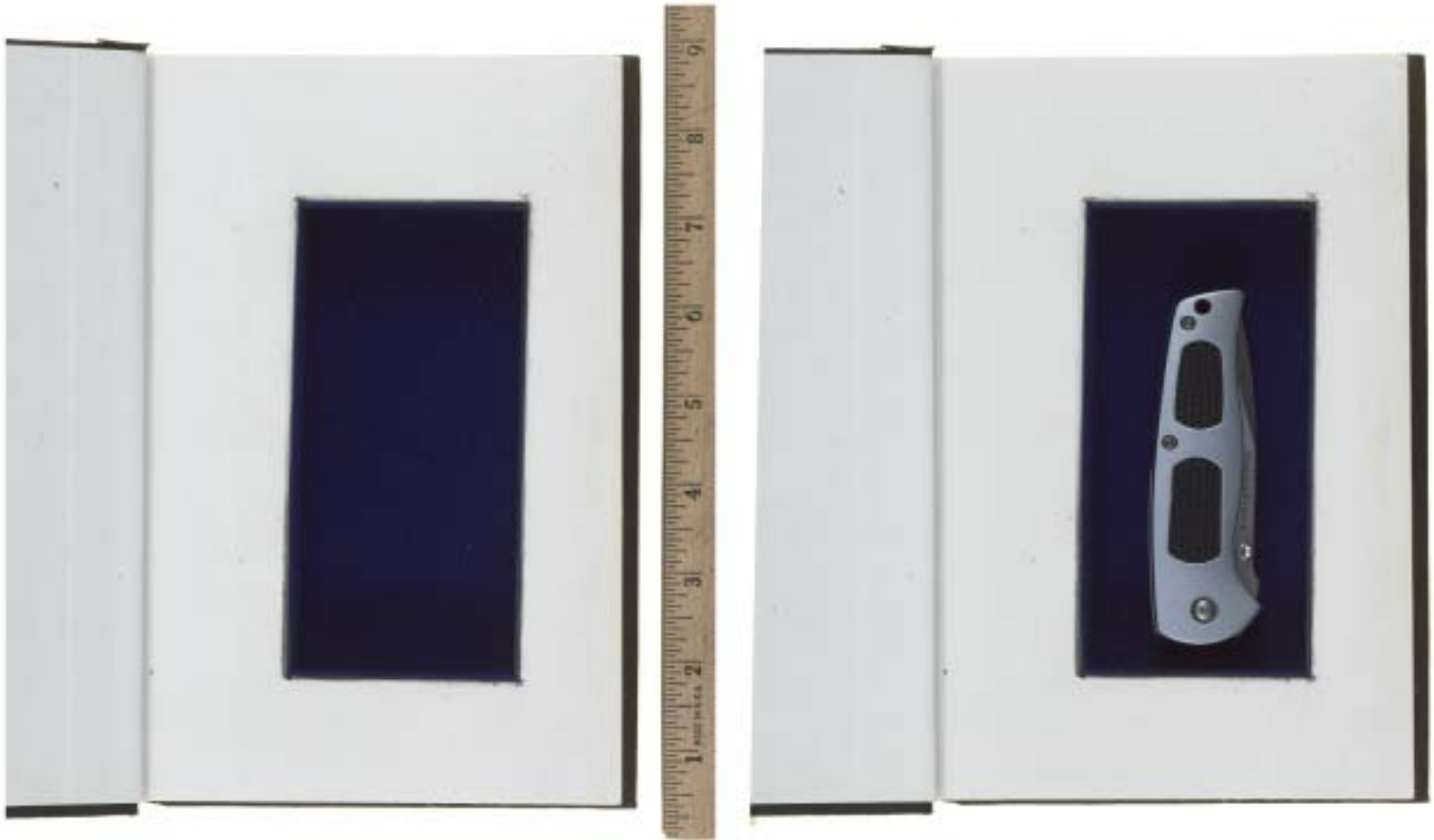
NOTE:
COLORS AND
STYLES VARY.





THIS CAN SAFE OPENS AT THE
BOTTOM TO STORE
ITEMS INSIDE.





THIS IS AN EXAMPLE OF A BOOK SAFE
THE PAGES ARE ONE SOLID PIECE AND
ARE HOLLOWED OUT ON THE INSIDE.

PAGER PAL HOLSTER

MANUFACTURER:
PAGER PAL
MADE IN USA

COMPOSITION:
FAKE PLASTIC "PAGER" WITH
LEATHER HOLSTER

NOTE: THIS INSIDE THE PANTS
HOLSTER CAN BE USED WITH
THE PROVIDED FAKE PAGER
OR A REAL ONE. THE HOLSTER
CAN ALSO HOLD SMALL
FIREARMS AND/OR KNIVES.



Any information concerning these knives or cutting tools not shown
in this booklet can be forwarded to:

**FEDERAL BUREAU OF INVESTIGATION
LABORATORY DIVISION
FIREARMS/TOOLMARKS UNIT
2501 INVESTIGATION PARKWAY
QUANTICO, VA 22135
(703) 632-7225/6**

